

Hydraulic Crawler Crane

KOBELCO

CK1100G

Max. Lifting Capacity : 110 US Tons

Max. Crane Boom Length : 200 ft

Max. Fixed Jib Combination : 190 ft + 60 ft



CK1100G CONTENTS

2 SPECIFICATIONS

6 G-MODE

7 LMI

8 WINCH PERFORMANCE

9 GENERAL DIMENSIONS

10 DIMENSIONS & WEIGHT

13 TRANSPORTATION PLAN

14 SELF ASSEMBLY PROCEDURE

15 COUNTERWEIGHT SELF-REMOVAL DEVICE

16 BOOM & JIB ARRANGEMENTS

17 WORKING RANGES

20 SUPPLEMENTAL DATA

21 LIFTING CAPACITY

29 CLAMSHELL DATA

32 BARGE DATA



CK1100G SPECIFICATIONS

General Description



<i>Type</i>	Crawler mounted, Lattice boom, Hydraulic controlled
<i>Maximum lift capacity</i>	220,000 lbs (99,800 kg) @ 11' operating radius (40' boom)
<i>Basic boom length</i>	40' (12.2 m)
<i>Maximum boom length</i>	200' (61.0 m)
<i>Basic boom & jib length</i>	80' + 30' (24.4 m + 9.1 m)
<i>Maximum boom & jib length</i>	190' + 60' (57.9 m + 18.3 m)
<i>Working weight</i>	Approx. 198,500 lbs (90,020 kg)
<i>Ground bearing pressure</i>	Approx. 12.9 psi (101 kPa)
<i>Gradeability</i>	40%

Calculations to determine working weight, ground bearing pressure, and gradeability include the weight of the upper and lower works of the crane, counterweights, and carbody weights, 40' boom and hook block.

General Dimensions

<i>Height to top of gantry (lowered)</i>	10'10" (3.31 m)
<i>Width of upper machine w/operator's cab</i>	9'10" (2.99 m)*
<i>Radius of rear end (counterweights)</i>	15'5" (4.70 m)
<i>Counterweight ground clearance</i>	3'8" (1.12 m)
<i>Center of rotation to boom foot pin</i>	3'7" (1.10 m)
<i>Height from ground to boom foot pin</i>	5'10" (1.77 m)
<i>Height over gantry (raised)</i>	20'4" (6.19 m)
<i>Overall length of crawlers</i>	20'7" (6.28 m)
<i>Overall width of crawlers</i>	17'2" (5.24 m)
<i>Center to center, idler to sprocket</i>	17'10" (5.44 m)
<i>Shoe width</i>	36" (0.91 m)
<i>Ground clearance of body</i>	15" (0.39 m)

Upper Machinery

Power Plant:

Diesel engine - make and model

Hino J08E-UV
(complies with Interim "Tier 4")

No. of cylinders 6

Bore X stroke 4-13/16" x 5-7/8"
(122 mm x 150 mm)

Cycles 4

Total displacement 469 cu.in. (7.684 l)

Rated output SAE GROSS
285 HP / 2,100 rpm (213 kW / 2,100 min⁻¹)

Maximum torque
750 lbs-ft / 1,600 rpm (1,017 Nm / 1,600 min⁻¹)

Starter 24 Volts / 5.0 kW

Alternator 24 Volts / 90 Amp

Batteries Two 12 volt, 136 AH/5 HR capacity series connected.

Radiator Corrugated type core, thermostatically controlled, with cleanout screen.

Throttle Twist grip type hand throttle, electrically controlled, in conjunction with floor mounted pedal.

Air cleaner Dry type with replaceable paper element.

Fuel tank capacity 106 US gal. (400 liters)

Lube oil filters Full flow and by-pass type with element type.

Fuel filter Replaceable paper element.

Working Speed

<i>Hoist line speed (front and rear drums)</i>	390 ~ 10 ft/min (120 ~ 3 m/min)
<i>Lowering line speed (front and rear drums)</i>	390 ~ 10 ft/min (120 ~ 3 m/min)
<i>Boom hoist line speed (front and rear drums)</i>	230 ~ 6.6 ft/min (70 ~ 2 m/min)
<i>Boom lowering line speed (front and rear drums)</i>	230 ~ 6.6 ft/min (70 ~ 2 m/min)
<i>Swing speed (max.)</i>	4.0 rpm
<i>Travel speed (high/low)</i>	1.07/0.71 mph (1.7/1.1 km/h)

Line speed based on single line, no load, and first layer of rope on the drum.



* - 10'5" wide with Catwalks on cab side only.
11' wide with Catwalks on both sides.



CK1100G

SPECIFICATIONS



Self Lifting Device - Standard Equipment

Counterweight and Carbody weight

Counterweight Base	1 x 18,200 (8,310 kg)
Counterweight (R)	2 x 12,700 (5,750 kg)
Counterweight (L)	2 x 12,700 (5,750 kg)
Total Counterweight	69,000 (31,310 kg)

Carbody weight	2 x 15,900 (7,200 kg)
Total Carbody weight	31,800 (14,400 kg)



Hydraulic system

Maximum pressure rating
4,626 psi (31.9MPa)

Cooling
Oil to air heat exchanger

Filtration
Full flow filters with replaceable
paper elements

Reservoir capacity
116.2 US gal. (440 liters)

Hydraulic pumps:

Load hoist, boom hoist, and propel

2 piston pumps, max flow rate
67.3 US gal/min x 2 (255 ℓ/min x 2)

Swing

1 piston pump, max flow rate
46.7 US gal/min (177 ℓ/min)

Control system and auxiliary

2 Gear pumps, max flow rate
16.3 US gal/min + 10.6 US gal (61.6 ℓ/min + 40.5 ℓ/min)

Brake cooling system

2 gear pumps, max flow rate
19.4 US gal/min x 2 (73.5 ℓ/min x 2)

Gantry

This high folding type gantry is fitted with a sheave frame for boom reeving. Hydraulic lift is standard. It provides full up, full down positions with linkage.

Operators cab

Totally enclosed from weather, this full-vision cab has safety glass all around. The adjustable, high-backed seat with armrest is capable of adjustment with or without the control console. Auxiliary controls and instruments are on a side mounted console. A signal horn, windshield wipers, air conditioner/heater, and swing limiter are all standard features.

Controls

At the operator's right are console-mounted adjustable short levers for the front and rear drum and the boom hoist control. Fine inching control and free fall activation switches are built in to the levers. Beside the seat on the right are two short levers for propel control, plus individual speed dial controls for front, rear, and boom drums. At the left is the console mounted swing lever, an optional 3rd drum control, switches for the front, rear, and boom drum pawls, and the engine start/stop key. A swing brake control switch and signal horn button are on the swing lever.

Swing:

Swing unit

Hydraulic motor driving spur gears through planetary reducers to output swing pinion for 360 degree rotation.

Swing brake

Spring set hydraulically released multiple disk brake mounted on swing motor.

Swing circle

Single row ball bearing with an integral internally cut swing gear.

Swing lock

Manual, 4 position lock for transportation.



CK1100G

SPECIFICATIONS



Line pull:

Max. line pull (single line) - 46,800 lbf (208 kN)

Rated line pull - 25,200 lbf (112 kN)

Lower Machinery

Crawlers:

Crawler assemblies can be hydraulically extended or retracted for wide track operation or retracted for transportation. Crawler belt tension adjusted with hydraulic jack and maintained by shims between the idler block and frame.

Crawler drive:

The independent two speed hydraulic propel drive is built into each crawler side frame. Each drive consists of a hydraulic motor driving a propel sprocket through a planetary gear box. The hydraulic motor and gear box are built into the crawler side frame within the shoe width.

Crawler brakes:

Spring set, hydraulically released, multiple disk-type parking brakes are built into each propel drive.

Steering mechanism:

A hydraulic propel system provides both skid steering and counter rotating steering.

Crawler shoe:

66 shoes - 36" wide, each crawler.

Track rollers:

The track rollers are sealed for maintenance free operation.

Front drum:

Front and rear drums for load hoist powered by hydraulic variable plunger motors, driven through planetary reducers.

Negative brake

A spring-set, hydraulically released multiple disk brake is mounted on the hoist motor and operated through a counter-balance valve.

Drum lock External ratchet for locking drum

Drums:

Front drum -

614 mm P.C.D. x 617 mm Lg., grooved for 26 mm wire rope. Rope capacity is 771' (235 m) working length and 1,181' (360 m) storage length.

Rear drum -

614 mm P.C.D. x 617 mm Lg., grooved for 26 mm wire rope. Rope capacity is 525' (160 m) working length and 1,181' (360 m) storage length.

3rd drum (optional) -

550 mm P.C.D. x 545 mm Lg., grooved for 22 mm wire rope. Rope capacity is 476' (145 m) working length and 1,099' (335 m) storage length.



CK1100G SPECIFICATIONS

Crane Attachments

Boom:

The welded lattice construction uses tubular, high-tension steel chords with pin connections between sections.

<i>Maximum boom length</i>	200' (61.0 m)
<i>Basic boom length</i>	40' (12.2 m)
<i>Boom base section</i>	19'7" (5.97 m)
<i>Boom tip section</i>	22'8" (6.91 m)

Boom insert (optional):

Optional boom inserts are available to provide extension capabilities. They are robotic welded, laser aligned, lattice constructed with tubular, high-tension steel chords and pin connections.

<i>Boom insert</i>	10' (3.1 m), 20' (6.1 m), 40' (12.2 m)
--------------------	--

Jib (optional):

Jib inserts are available to provide extension capabilities. The optional jib employs welded lattice construction with tubular, high-tension steel chords with pin connections between sections.

<i>Maximum jib length</i>	60' (18.3 m)
<i>Basic jib length</i>	30' (9.1 m)
<i>Jib base section</i>	15'9" (4.8 m)
<i>Jib tip section</i>	16'5" (5.0 m)
<i>Jib insert</i>	10' (3.1 m), 20' (6.1 m)

Jib is useable on booms of 80' (24.4 m) through 190' (57.9 m)



Auxiliary sheave (optional):

Auxiliary sheave is extendible on booms of 40' (12.2 m) through 190' (57.9 m)

Boom hoist reeving:

Twelve (12) parts of 5/8" (16.0 mm) diameter high strength wire rope.

Boom backstops:

Telescopic type with spring bumper

Standard Equipment

Lights:

- Two (2) front flood lights
- One (1) cab inside light

Gauges and warning display

Gauges

- One (1) tachometer
- One (1) hour meter
- One (1) fuel gauge
- One (1) water temperature

Warning display

- Battery charge
- Engine oil pressure
- Air cleaner
- Engine oil filter
- Control main pressure
- Hydraulic oil temperature
- DPF condition indicator

Others

- Air conditioner/heater
- Drum turn indicator (front/rear)
- Foot pedal / throttle
- Electric transfer pump
- Counterweight self-removal device
- KCross Telematics
- Free fall winches

Safety Service

- Function lock lever
- Swing Limiter
- Boom over hoist limit switch
- Signal horn
- Front/rear hoist drum lock
- Swing Limiter (Buzzer, lamps, or stops)
- Overload prevention device (LMI)
- Hook over hoist shut off (Anti-two-block)
- Boom angle indicator
- Travel alarm

Safety Service (cont)

- Level indicator
- Boom hoist drum lock
- Swing locks, anti drift, and mechanical
- Boom backstops
- Boom base catwalk
- Upper machinery catwalk, handrails and ladder

Tools and Accessories

A set of tools and accessories are furnished.

Optional Equipment

- Third drum
- Hook block
- Hook ball
- Auxiliary sheave
- Fixed jib
- Boom inserts
- Carbody erection cylinder



CK1100G SPECIFICATIONS

G-Mode

The G-modes are a standard exclusive energy and fuel saving system, with up to 30% in fuel savings. The G-Mode eliminates needless operations and engine functions allowing for reduced fuel consumption by using three basic modes that are all operator selectable.

Auto Idling Stop Mode (AIS):

An Industry First

The AIS mode can conserve fuel by stopping the engine, with an operator prompt, after 10 seconds of idling time. Restarting the engine is simple by just twisting the throttle.



G-Winch Mode:

An Industry First

The G-winch mode can produce maximum winch line speed at a low engine RPM.



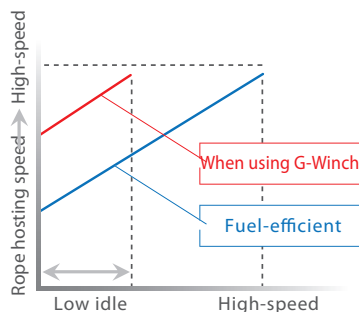
G-Engine



G-Winch



AIS



The high speed mode allows the line to be raised or lowered at maximum line speed without raising engine speed when lifting without a load.

G-Engine Mode:

An Industry First

The G-engine mode limits maximum engine speed to 1,750 RPM and controls the pumps to make engine operation in the most efficient condition.



Exhaust cleaning DPR:

The DPR (diesel particulate active reduction system) burns PM (particulate matter) collected by the DPF (diesel particulate filter) from the diesel exhaust gas, increasing the PM collection efficiency of the DPF, and recovering to purify the exhaust. This means that the exhaust gas from the diesel engine is cleaner, conforming with current EPA Interim Tier 4 regulations.



A new clean diesel system - although diesel engines consume less fuel and emit less CO₂ than gasoline engines, they also emit more harmful particulate matter and nitrogen oxide (NO_x). The "new clean energy system" engine utilizes a DPF to reduce particulate matter, which is also kept to a minimum using negative ions. This system requires the use of low sulfur diesel.

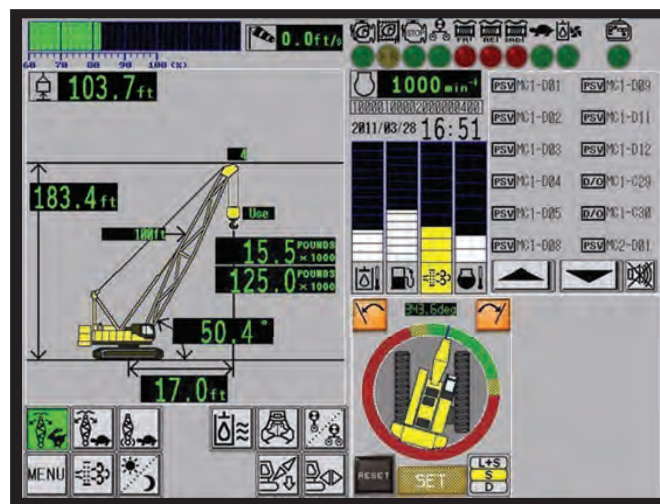
* Warning: High sulfur diesel will damage the engine.



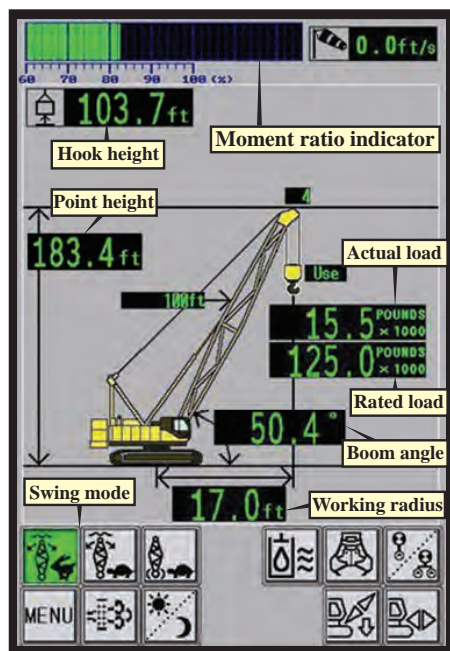
CK1100G SPECIFICATIONS

Load Moment Indicator (LMI)

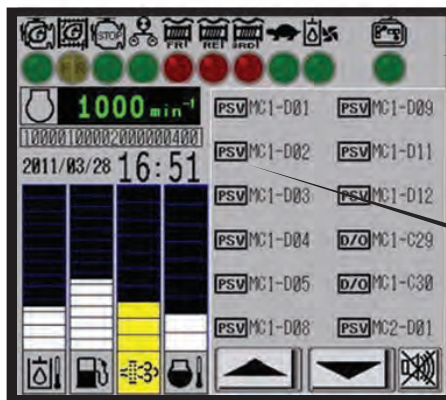
The Kobelco newly designed 12" touch panel screen with sunshade and screen protector is an industry first. This intuitive and easy to understand new touch screen monitor gives the operator a full display of essential data. Universal pictograms are used providing easy visual recognition, making this new technology easy to read and understand the information. This new monitor includes: Hook Height, Engine Speed, Display Lamp of standard functions, Gauges, Over-Swing Prevention Device, Switches, and Error Messages.



Moment Limiter (Left Side)



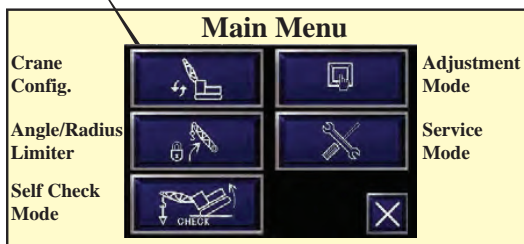
Gauges (Right Side)



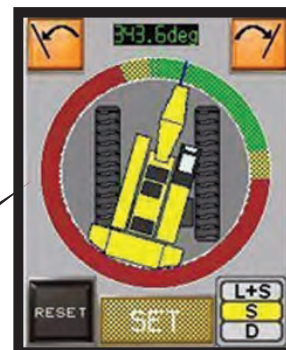
Display Lamp
 Display lamp Remote control connection
 G-Engine Oil cooler operation
 G-Winch Free fall (auxiliary)
 AIS operation Free fall (3rd)
 Slow speed state

Error Message
 Touch to display details in a pop-up window.

Gauges
 Hydraulic oil temperature
 Fuel gauge
 Diesel particulate filter gauge
 Coolant temperature
 * Figures for the above gauges are only shown when the bar is touched.



Over-Swing Prevention
 An over-swing preventative device is standard. It limits the swing of the crane. Configuration is simple and can be done from the touch panel.



CK1100G SPECIFICATIONS

Winch Performance Data

Note:

Line speed and line pull based on Hino J08E-UV at 2,100 rpm.

Line speed and line pull based on single line.

Max. line pull is based on referential performance, not wire rope strength.

Front & Rear Drum

Wire Rope Diameter = 26 mm

Rated Line Pull = 25,200 lbf (112 kN)

Maximum Line Pull = 46,800 lbf (208 kN)

Total Storage Capacity = 1,185 ft (361.2 m)

		Line speed (ft/min)						
		Layer	1	2	3	4	5	6
		0	393	421	449	476	504	
		5,000	393	421	449	476	504	
		10,000	387	414	440	467	494	
Line Pull (lbs)	15,000	360	360	348	348	348		storage only
	20,000	270	270	261	261	261		
	25,200	214	214	199	187	173		
	30,000	166	149	140	138	136		
	35,000	120	118	114	109			
	40,000	100	95					
Storage Capacity (ft)		139	149	159	169	179	189	

Third Drum (for Load hoist)

Wire Rope Diameter = 22 mm

Rated Line Pull = 17,000 lbf (78.5 kN)

Maximum Line Pull = 32,400 lbf (144 kN)

Total Storage Capacity = 1,099 ft (334.9 m)

		Line speed (ft/min)						
		Layer	1	2	3	4	5	6
		0	394	394	394	394	394	
		5,000	394	394	394	394	394	
		10,000	227	227	227	227	227	
Line Pull (lbs)	15,000	147	152	161	170	179		storage only
	17,000	142	151	160	169	178		
	20,000	140	149	158	167	176		
	25,000	138	147	155	164	172		
	30,000	136	144					
Storage Capacity (ft)		130	139	148	157	166	175	

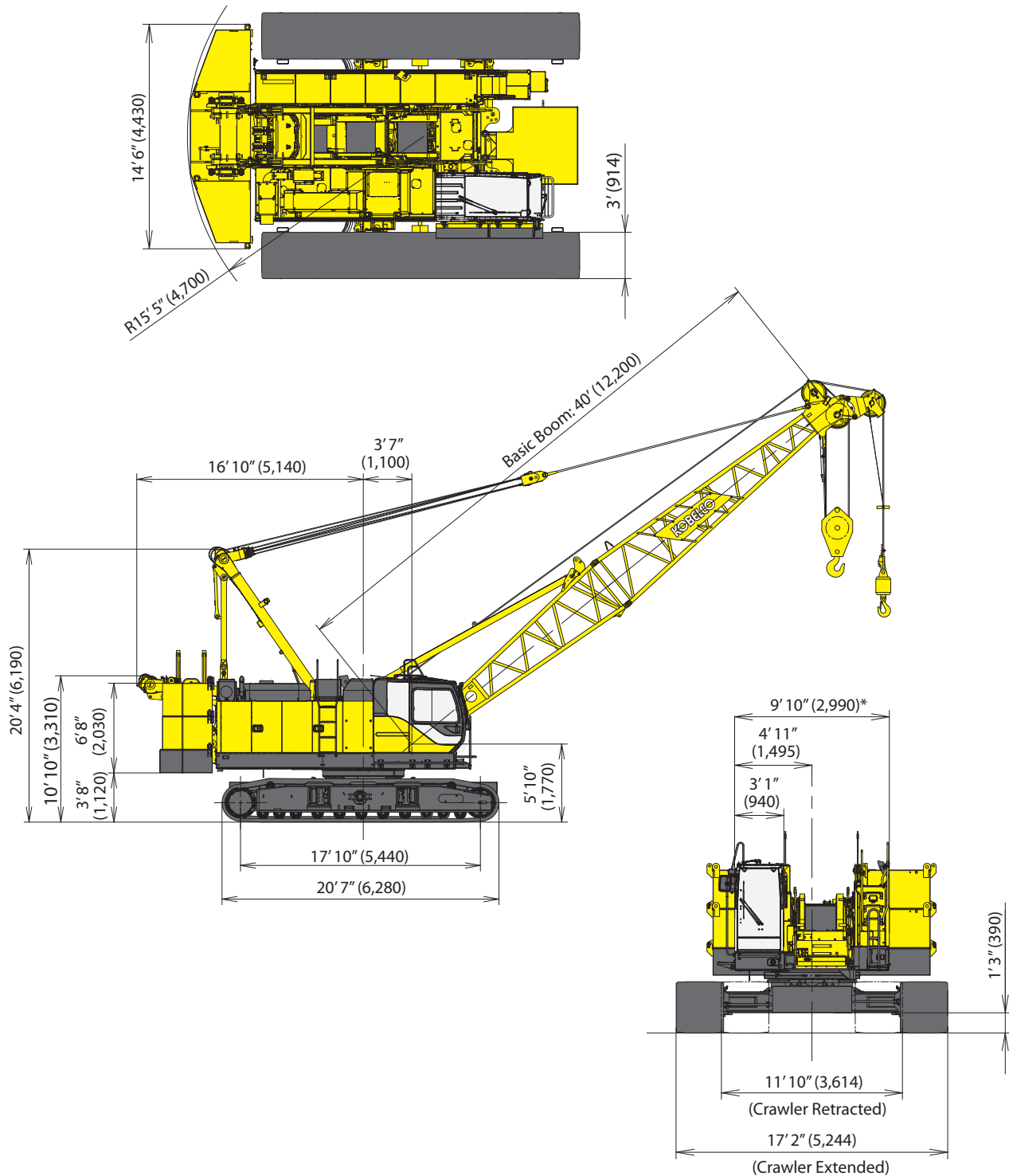
Wire Rope Specifications

Use	Construction	No load diameter	Length	Safety Factor	Required minimum breaking strength
Front drum	6 x 29 Filler IWRC Right hand lay, Regular lay	1.049" to 1.070" (26.65 mm to 27.17 mm)	771ft (235 m)	3.5: 1	120,048 lbf (534 kN)
Rear drum	6 x 29 Filler IWRC Right hand lay, Regular lay	1.049" to 1.070" (26.65 mm to 27.17 mm)	525ft (160 m)	3.5: 1	120,048 lbf (534 kN)
Boom drum	6 x 31 P Warrington seal Right hand lay, Regular lay	0.646" to 0.658" (16.40 mm to 16.72 mm)	492ft (150 m)	3.5: 1	47,210 lbf (210 kN)
Third drum (Optional)	6 x 29 Filler IWRC Right hand lay, Regular lay	0.888" to 0.905" (22.55 mm to 22.99 mm)	476ft (145 m)	3.5: 1	81,606 lbf (363 kN)



CK1100G SPECIFICATIONS

General Dimensions



* - 10'5" wide with Catwalks on cab side only.
11' wide with Catwalks on both sides.

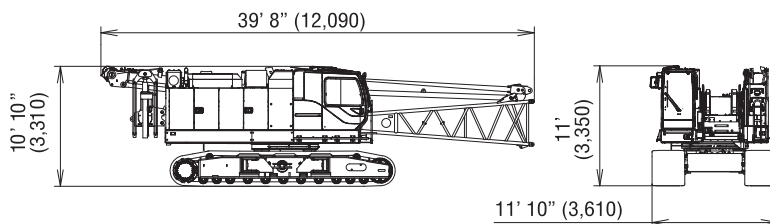
CK1100G SPECIFICATIONS

Dimensions and Weight

Dimensions: ft-in (mm) Weight: lbs (kg)

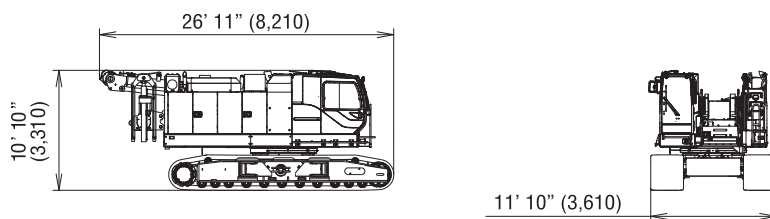
Base Machine - 1

Weight: 95,200 lbs (43,150 kg)
Boom base, gantry, crawlers, self removal unit, and wire ropes (front, rear, and boom hoist)



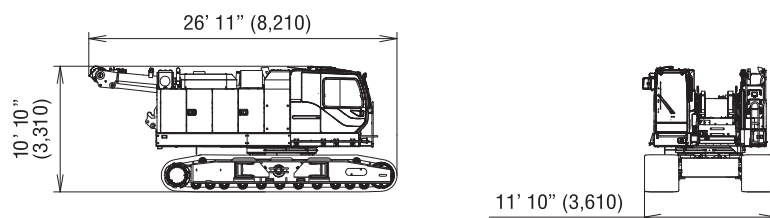
Base Machine - 2

Weight: 90,600 lbs (41,090 kg)
Gantry, crawlers, self removal unit, and wire ropes (front, rear, and boom hoist)



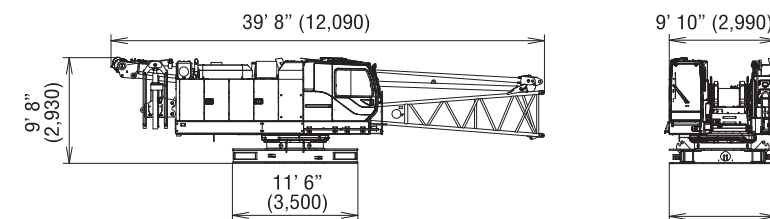
Base Machine - 3

Weight: 88,700 lbs (40,230 kg)
Gantry, crawlers, and wire ropes (front, rear, and boom hoist)



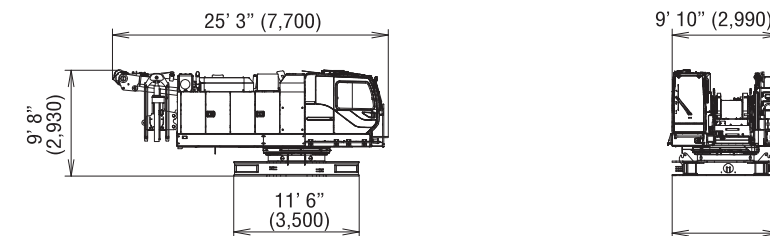
Base Machine - 4

Weight: 61,500 lbs (27,880 kg)
Boom base, gantry, self removal unit, and wire ropes (front, rear, and boom hoist)



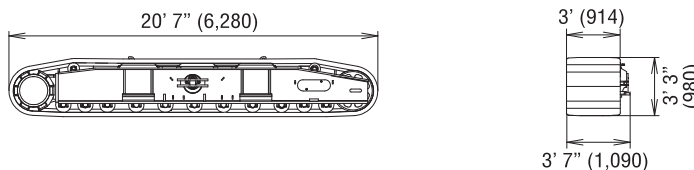
Base Machine - 5

Weight: 56,900 lbs (25,820 kg)
Gantry, self removal unit, and wire ropes (front, rear, and boom hoist)



Crawler

Weight: 16,850 lbs (7,640 kg)



* - 10'5" wide with Catwalks on cab side only.
11' wide with Catwalks on both sides.

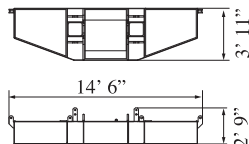


CK1100G SPECIFICATIONS

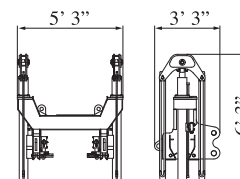
Dimensions and Weight

Dimensions: ft-in (mm) Weight: lbs (kg)

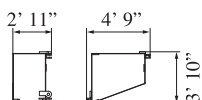
Counterweight Base
Weight: 18,200 lbs (8,310 kg)



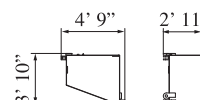
Self Removal Unit
Weight: 1,900 lbs (870 kg)



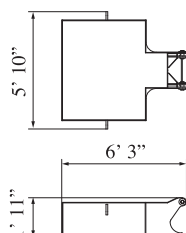
Counterweight (R)
Weight: 12,700 lbs (5,750 kg)



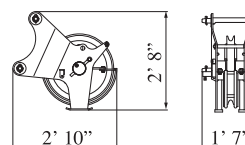
Counterweight (L)
Weight: 12,700 lbs (5,750 kg)



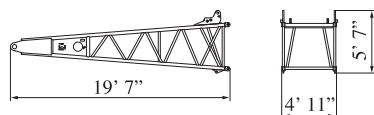
Carbody Weight
Weight: 15,900 lbs (7,200 kg)



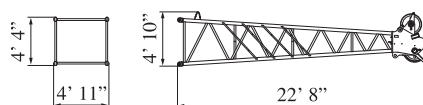
Auxiliary Sheave
Weight: 430 lbs (195 kg)



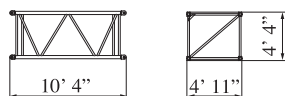
Boom Base
Weight: 3,400 lbs (1,517 kg)



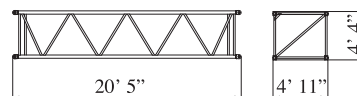
Boom Tip
Weight: 2,900 lbs (1,292 kg)
Includes cable roller and guy lines



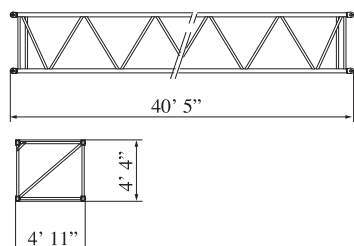
10 ft (3.0 m) Insert Boom
Weight: 800 lbs (364 kg)
Includes cable roller and guy lines



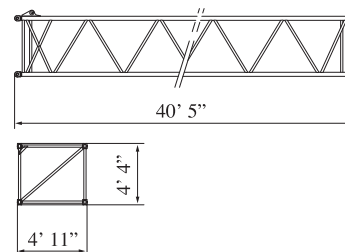
20 ft (6.1 m) Insert Boom
Weight: 1,400 lbs (613 kg)
Includes cable roller and guy lines



40 ft (12.2 m) Insert Boom
Weight: 2,400 lbs (1,098 kg)
Includes cable roller and guy lines



40 ft (12.2 m) Insert Boom (with lug)
Weight: 2,500 lbs (1,113 kg)
Includes cable roller and guy lines



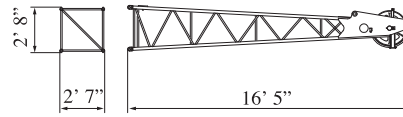
CK1100G SPECIFICATIONS

Dimensions and Weight

Dimensions: ft-in (mm) Weight: lbs (kg)

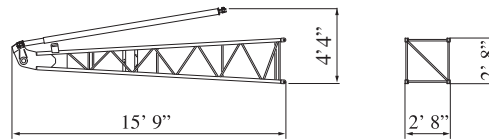
Jib Tip

Weight: 500 lbs (227 kg)
Includes cable roller.



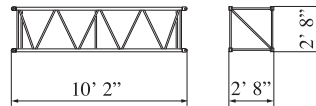
Jib Base and Strut

Weight: 1,400 lbs (637 kg)
Includes guy line.



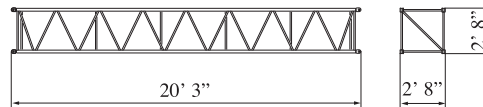
10 ft (3.0 m) Insert Jib

Weight: 280 lbs (128 kg)
Includes cable roller and guy line.



20 ft (6.1 m) Jib Insert

Weight: 480 lbs (218 kg)
Includes cable roller and guy line.



CK1100G SPECIFICATIONS

Transportation Plan

Refer to pages 10-12

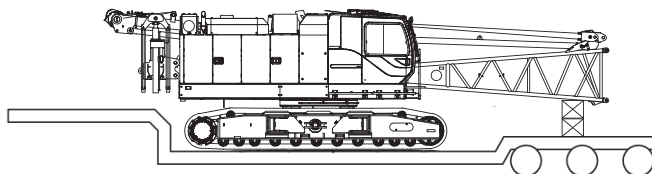
Shipping plan for 150 ft Boom

Description of Item	Weight		Trailer Loads			
	lbs	(kg)	#1	#2	#3	#4
Base Machine with Boom Base and Crawlers*	95,200	(43,150)	1			
Counterweight Base	18,200	(8,310)		1		
Counterweight (L)	12,700	(5,750)			2	
Counterweight (R)	12,700	(5,750)		1	1	
Carbody Weight	15,900	(7,200)				2
10 ft Insert Boom and Guy Line	800	(364)			1	
20 ft Insert Boom and Guy Line	1,400	(613)		1		
40 ft Insert Boom and Guy Line	2,400	(1,098)			1	
40 ft Insert Boom (w/ Lug) and Guy Line (A)	2,500	(1,113)				1
Boom Tip and Guy Line	2,900	(1,292)		1		
Jib Base and Guy Line	1,400	(637)				
10 ft Insert Jib and Guy Line	280	(128)				
20 ft Insert Jib and Guy Line	480	(218)				
Jib Tip	500	(227)				
75 Ton Block	3,000	(1,361)		1		
13 Ton Ball	800	(365)		1		
Ladder Assembly	90	(41)				1
Support Box	5,000	(2,268)				1
Approx. Total Shipping Weight		lbs (kg)	95,200 (43,150)	39,000 (17,691)	41,300 (18,712)	39,390 (17,822)

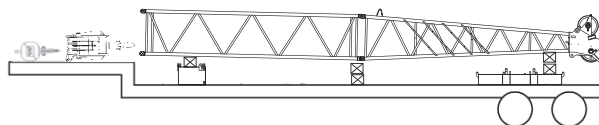
* Third drum is not included. Add 4,200 lbs if third drum is installed.

Loads for transportation were targeted at 45,000 lbs, 8' 6" wide, 48' long and 13' 6" high from ground, 48" step deck. This may vary depending on truck/trailer weight, style of trailer and state law.

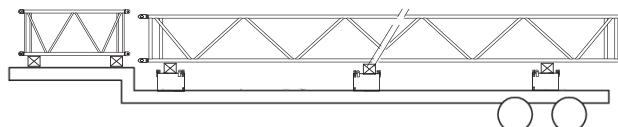
Trailer #1



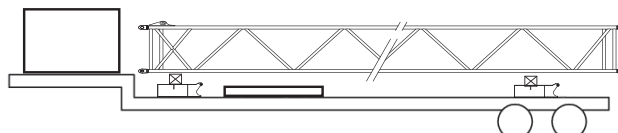
Trailer #2



Trailer #3

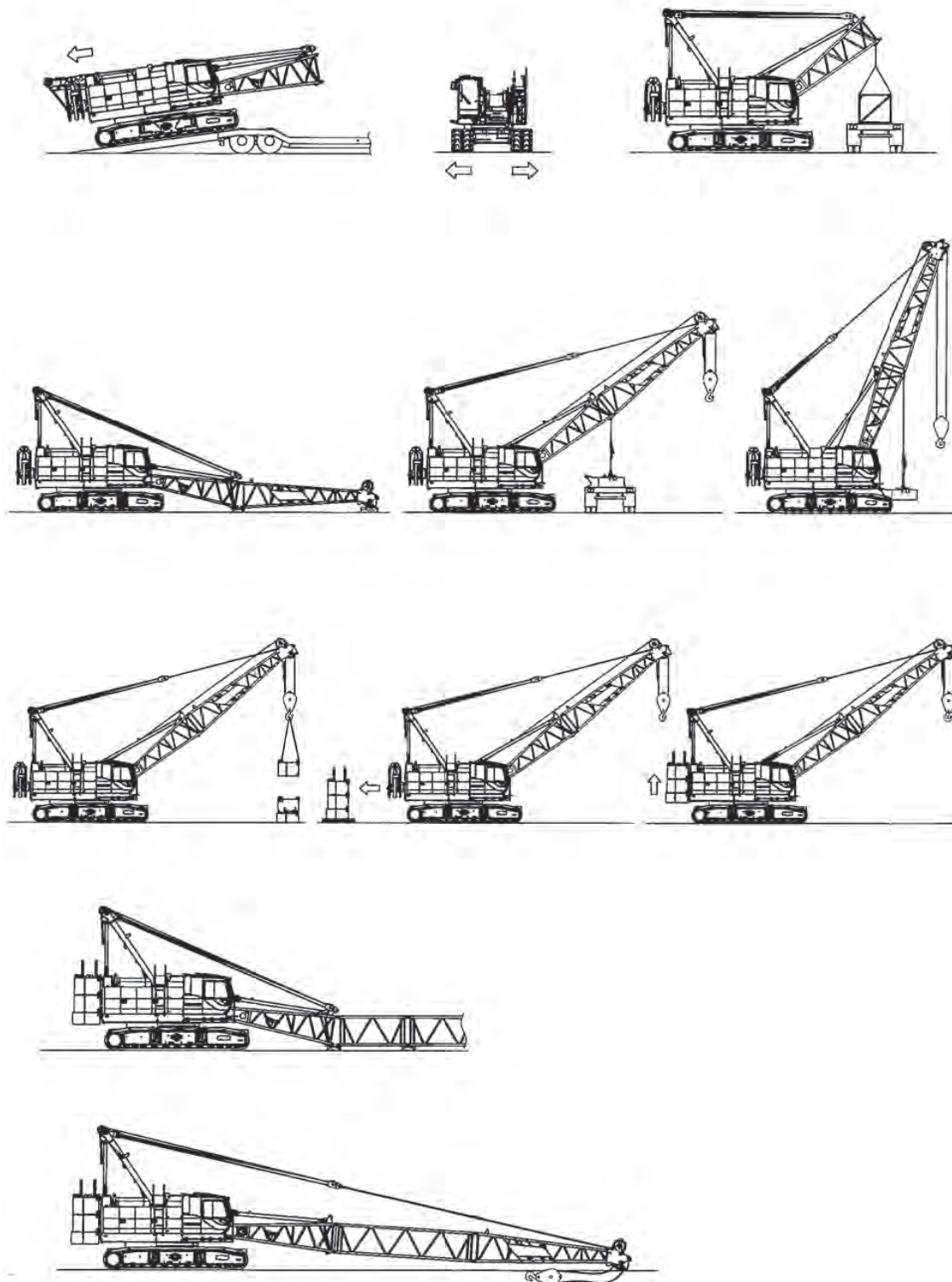


Trailer #4



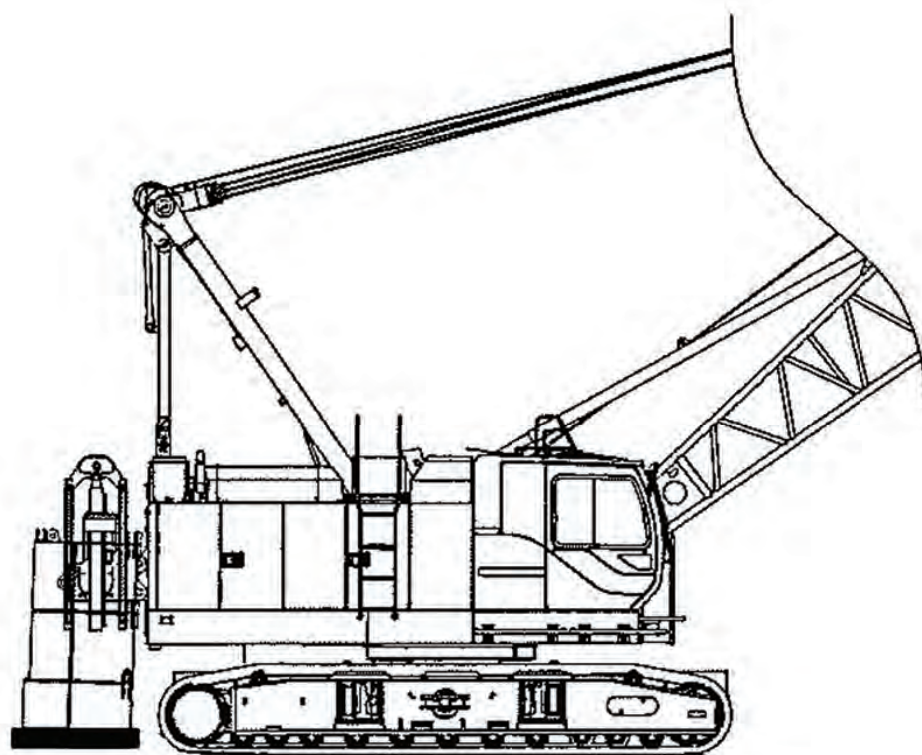
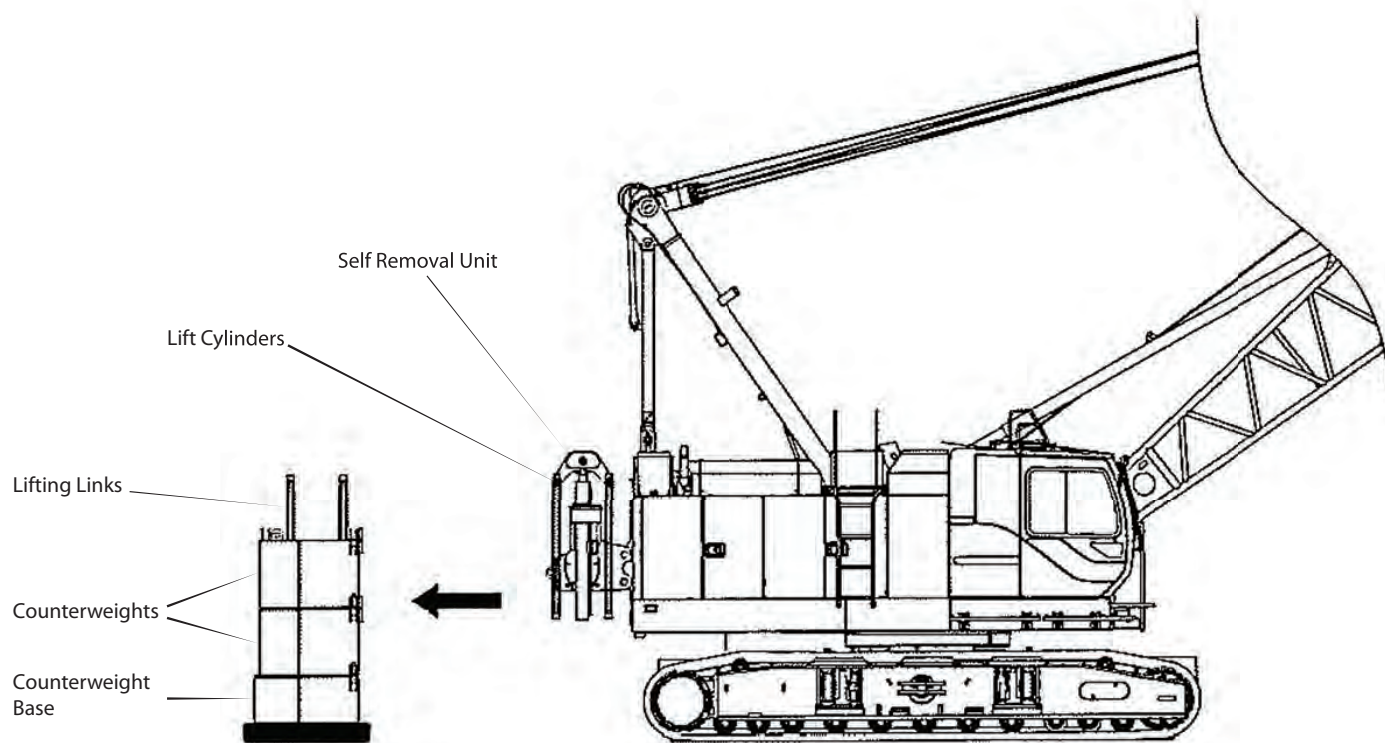
CK1100G SPECIFICATIONS

Self-Assembly Procedure



CK1100G SPECIFICATIONS

Counterweight Self-Removal Device



CK1100G SPECIFICATIONS

Boom and Fixed Jib Arrangement

Boom Arrangement

Boom length ft (m)	Boom arrangement
40 (12.2)	
50 (15.2)	
60 (18.3)	※
70 (21.3)	※
80 (24.4)	※
90 (27.4)	※
100 (30.5)	※
110 (33.5)	※
120 (36.6)	※
130 (39.6)	※
140 (42.7)	※

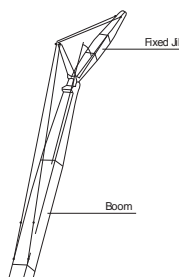
Boom length ft (m)	Boom arrangement
150 (45.7)	※
160 (48.8)	※
170 (51.8)	※
180 (54.9)	※
190 (57.9)	※
200 (61.0)	※

Symbol	Boom Length	Remarks
	20.0 ft (6.1 m)	Boom Base
	20.0 ft (6.1 m)	Boom Top
	10.0 ft (3.1 m)	Insert Boom
	20.0 ft (6.1 m)	Insert Boom
	40.0 ft (12.2 m)	Insert Boom
	40.0 ft (12.2 m)	Insert Boom with lug

↗ mark shows the guy line installing position when the fixed jib is used.

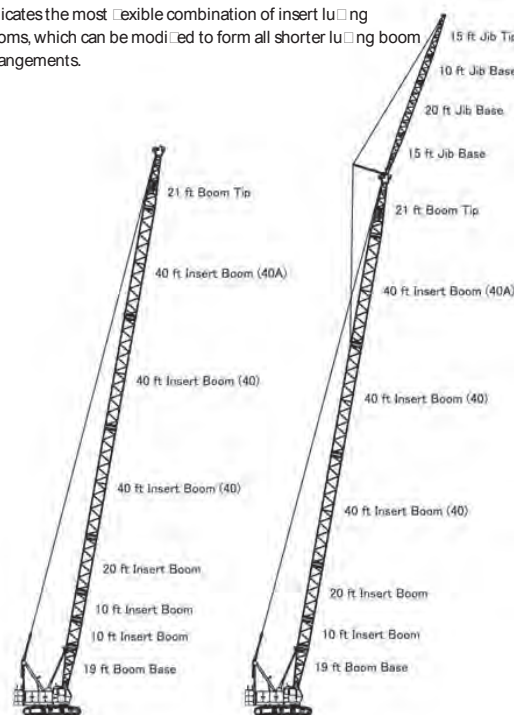
※ indicates the most flexible combination of insert lugging booms, which can be modified to form all shorter lugging boom arrangements.

Fixed Jib Arrangement



Crane boom length	Jib length ft (m)	Jib arrangement
80 ft (24.4 m) } 190 ft (57.9 m)	30 (9.1)	
	40 (12.2)	
	50 (15.2)	
	60 (18.3)	

Symbol	Jib Length	Remarks
	15 ft (4.6 m)	Jib Base
	15 ft (4.6 m)	Jib Top
	10 ft (3.0 m)	Insert Jib
	20 ft (6.1 m)	Insert Jib



Main Boom - 200 ft (61.0 m)

Main Boom - 190 ft (57.9 m)
Fixed Jib - 60 ft (18.3 m)

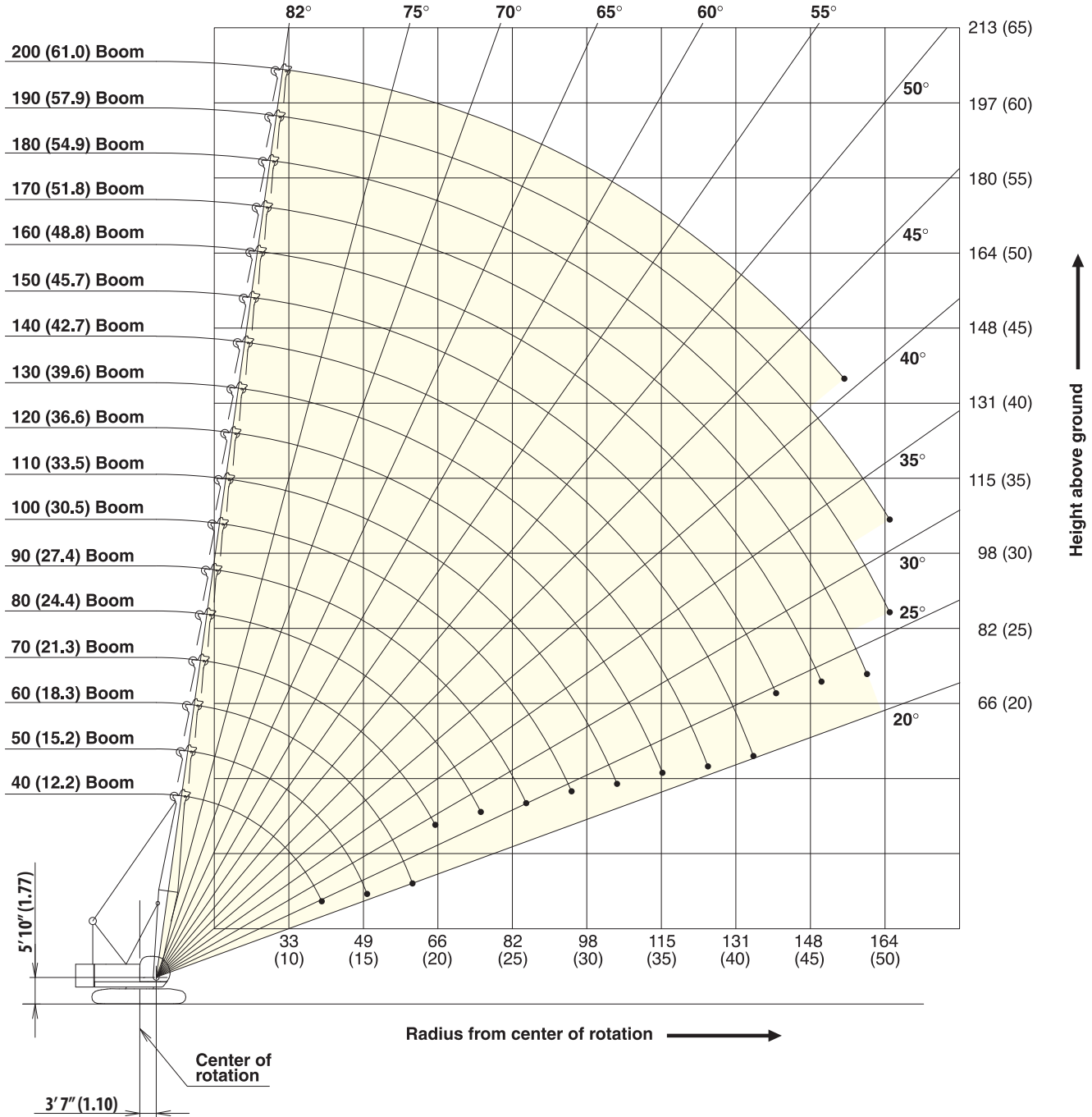


CK1100G SPECIFICATIONS

Working Ranges

Main Boom

Unit : ft (m)

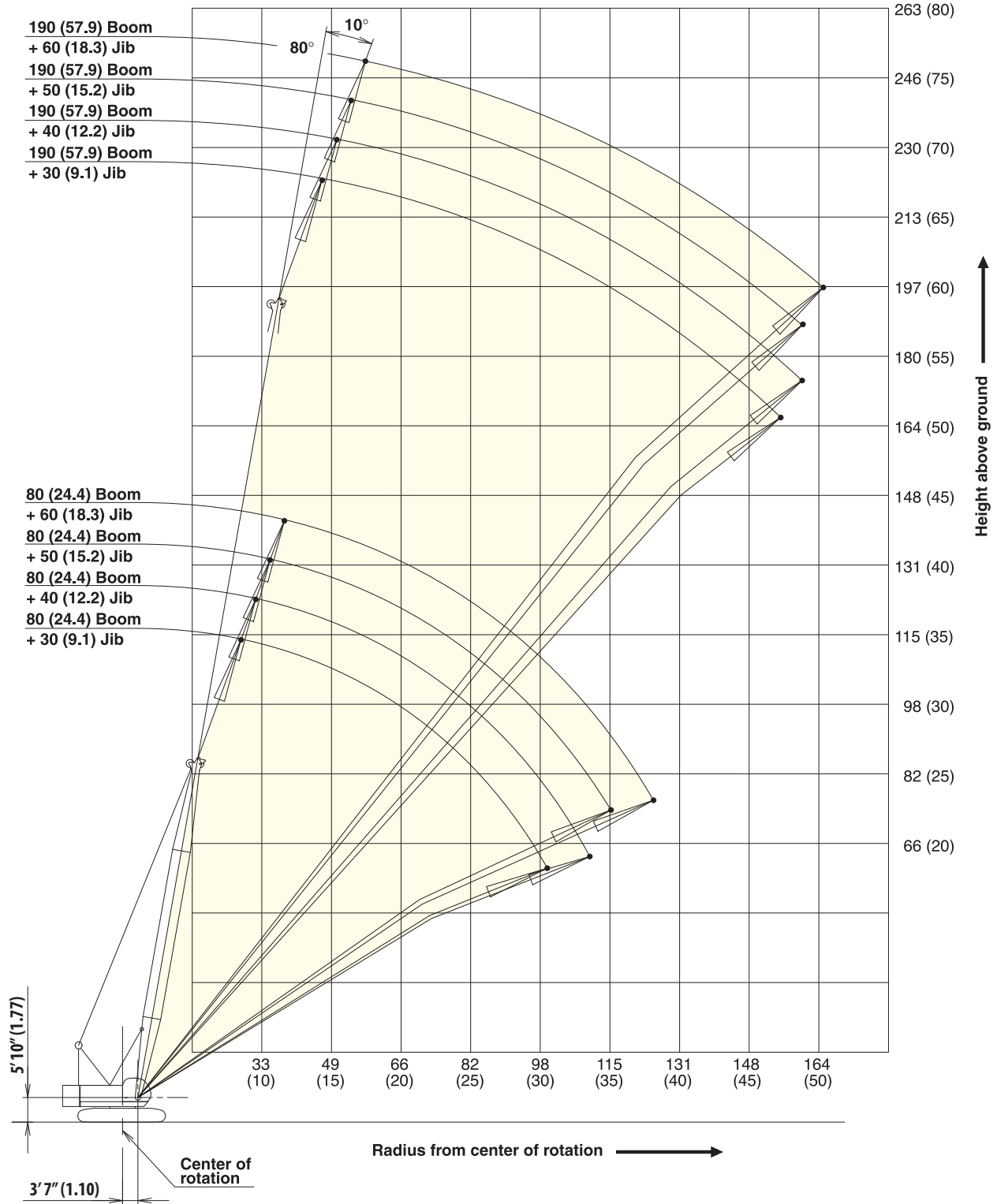


CK1100G SPECIFICATIONS

Working Ranges

Fixed Jib 10°

Unit : ft (m)

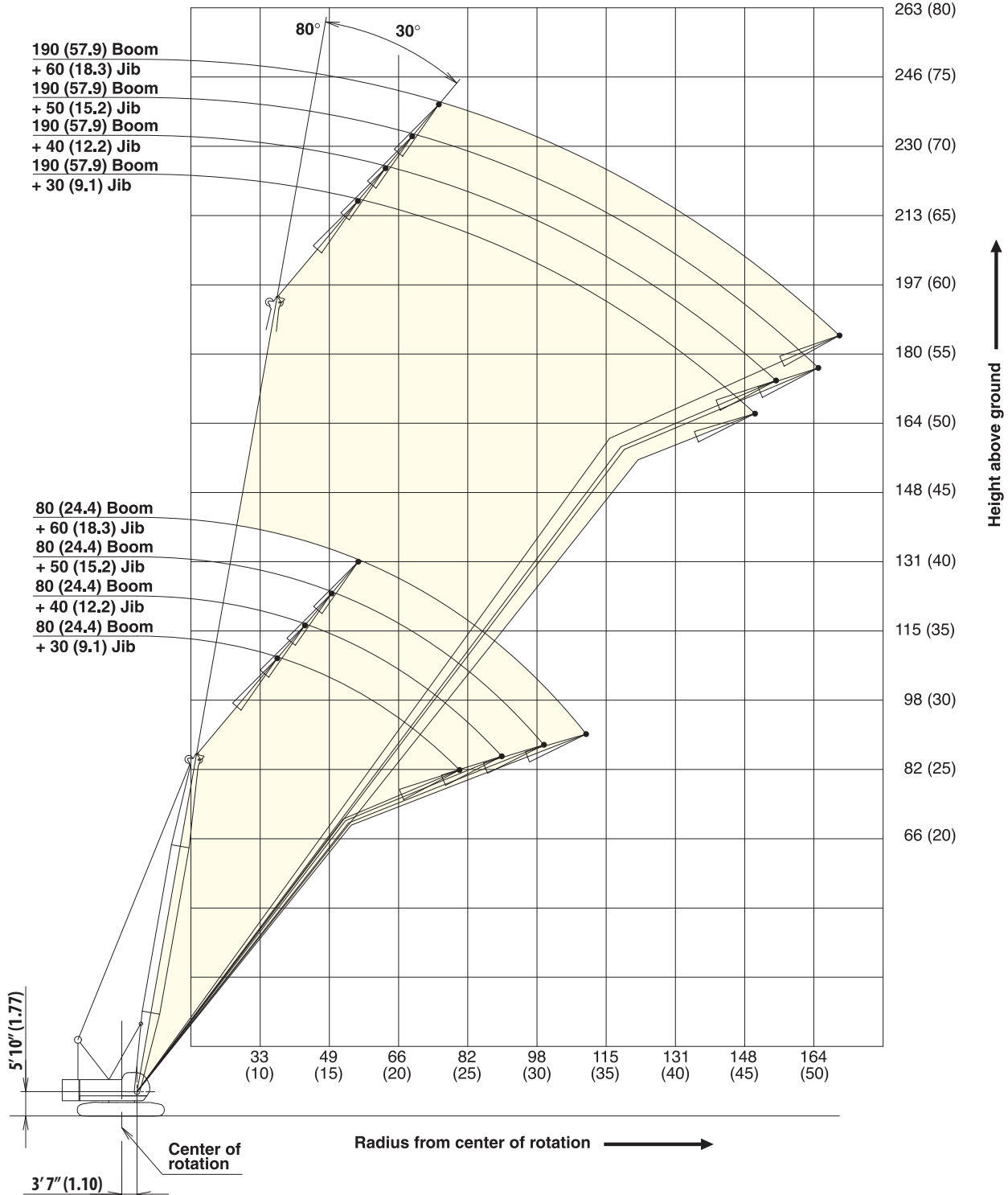


CK1100G SPECIFICATIONS

Working Ranges

Fixed Jib 30°

Unit : ft (m)



CK1100G SPECIFICATIONS

Supplemental Data

1. Rated loads included in the charts are the maximum allowable freely suspended loads at a given boom length, boom angle and load radius, and have been determined for the machine standing level on firm supporting surface under ideal operating conditions. The user must limit or de-rate rated loads to allow for adverse conditions (such as soft or uneven ground, out-of-level conditions, wind, side loads, pendulum action, jerking or sudden stopping of loads, inexperience of personnel, multiple machine lifts, and traveling with a load).
2. Rated loads do not exceed 75% of minimum tipping loads. Rated loads based on factors other than machine stability such as structural competence are shown by asterisk * in the charts.
3. The machine must be reeved and set-up as stated in the operation manual and all the instruction manuals if these manuals are missing, obtain replacements.
 - The crane must be leveled to within 1% on a firm supporting surface.
 - Boom backstops are required for all boom length.
 - Gantry must be fully raised position for all operations.
4. Do not attempt to lift where no radius on load is listed as crane may tip or collapse.
5. Attempting to lift more than rated loads may cause machine to tip or collapse. Do not tip machine to determine rated loads.
6. Weight of hooks, hook blocks, slings and other lifting devices are a part of the total load. Their total weight must be subtracted from the rated load to obtain the weight that can be lifted.
7. When lifting over boom point with jib or auxiliary sheave, rated loads for the boom must be deducted as shown below.

Jib Length	Aux Sheave	30 ft	40 ft	50 ft	60 ft
Deduct (lbs)	430	2,500	3,700	5,100	6,700

8. The total load that can be lifted by jib is limited by rated jib loads.
9. Boom lengths for jib mounting are 80 ft (24.4 m) to 190 ft (57.9 m)
10. The total load that can be lifted by the auxiliary sheave is the value for 430 lbs deducted from rated load for the boom (without auxiliary sheave installed); however, the auxiliary sheave rated load should not exceed 24,000 lbs.

11. Boom lengths that can attach auxiliary sheave are from 40 ft (12.2 m) to 190 ft (57.9 m).
12. The boom should be erected over the front of the crawlers, not laterally. When lifting from or lowering to the ground the boom at length of 190 ft (57.9 m) with jib, the blocks for erections must be placed at the end of the crawlers.
13. Least stable position is over the side.
14. Maximum hoist load for number of reeving parts of line for hoist rope.

Maximum Load for Main Boom

No. of Parts of line	1	2	3	4	5
Maximum Loads (lbs)	25,200	50,400	75,600	100,800	126,000

No. of Parts of line	6	7	8
Maximum Loads (lbs)	151,200	176,400	220,000

Maximum Load for Fixed Jib

No. of Parts of line	1
Maximum Loads (lbs)	24,000

Maximum Load Auxiliary Sheave

No. of Parts of line	1
Maximum Loads (lbs)	24,000

15. Rated loads listed apply only to the machine as originally manufactured and designed by KOBELCO CRANES CO., LTD. Modifications to this machine or use of equipment other than that specified can reduce operating capacity.
16. Designed and rated to comply with ANSI Code B30.5.



CK1100G SPECIFICATIONS

Main Boom Lift Capacity

Full Counterweight: 69,000 lbs Carbody Weight: 31,800

40' Boom			50' Boom			60' Boom			70' Boom			80' Boom		
Load Radius (ft)	Boom Angle (deg.)	360° Rated Load (lbs)	Load Radius (ft)	Boom Angle (deg.)	360° Rated Load (lbs)	Load Radius (ft)	Boom Angle (deg.)	360° Rated Load (lbs)	Load Radius (ft)	Boom Angle (deg.)	360° Rated Load (lbs)	Load Radius (ft)	Boom Angle (deg.)	360° Rated Load (lbs)
11.0	80.5	220,000 *	12.0	81.2	213,200 *	13.0	81.7	200,400 *	15.0	81.3	151,000 *	16.0	81.6	151,000 *
12.0	79.0	213,300 *	13.0	80.0	200,600 *	14.0	80.7	187,400 *	16.0	80.4	151,000 *	17.0	80.9	149,300 *
13.0	77.5	200,800 *	14.0	78.9	187,800 *	15.0	79.8	175,200 *	17.0	79.6	149,400 *	18.0	80.2	146,500 *
14.0	76.0	188,100 *	15.0	77.7	175,600 *	16.0	78.8	164,800 *	18.0	78.7	146,700 *	19.0	79.5	139,400 *
15.0	74.6	175,900 *	16.0	76.6	165,300 *	17.0	77.8	155,500 *	19.0	77.9	139,800 *	20.0	78.8	131,800
16.0	73.1	165,500 *	17.0	75.4	156,000 *	18.0	76.8	146,900 *	20.0	77.1	132,200	22.0	77.3	115,100
17.0	71.6	156,300 *	18.0	74.2	147,400 *	19.0	75.9	139,800 *	22.0	75.4	115,400	24.0	75.8	101,000
18.0	70.1	147,800 *	19.0	72.9	140,100 *	20.0	74.9	132,200	24.0	73.7	101,300	26.0	74.3	89,200
19.0	68.5	140,500 *	20.0	71.7	132,400	22.0	72.9	115,100	26.0	72.0	89,600	28.0	72.8	80,500
20.0	66.9	132,800	22.0	69.3	115,300	24.0	70.9	100,800	28.0	70.3	80,800	30.0	71.2	72,800
22.0	63.7	115,600	24.0	66.8	101,000	26.0	68.8	89,100	30.0	68.5	73,000	32.0	69.7	66,600
24.0	60.4	101,300	26.0	64.3	89,400	28.0	66.7	80,500	32.0	66.7	67,000	34.0	68.2	61,600
26.0	57.0	89,600	28.0	61.7	80,700	30.0	64.6	72,800	34.0	64.9	62,000	36.0	66.6	57,300
28.0	53.4	80,900	30.0	59.1	73,000	32.0	62.5	66,600	36.0	63.0	57,800	38.0	65.1	53,100
30.0	49.8	73,300	32.0	56.3	67,000	34.0	60.3	61,600	38.0	61.2	53,600	40.0	63.5	49,300
32.0	45.8	67,200	34.0	53.4	62,000	36.0	58.0	57,300	40.0	59.3	49,800	42.0	61.8	46,600
34.0	41.2	61,700	36.0	50.3	57,800	38.0	55.7	53,100	42.0	57.3	46,900	44.0	60.2	43,800
36.0	36.2	56,600	38.0	47.3	53,600	40.0	53.4	49,300	44.0	55.3	44,100	46.0	58.5	41,100
38.0	31.1	51,500	40.0	44.0	49,800	42.0	50.9	46,600	46.0	53.3	41,300	48.0	56.8	39,100
40.0	25.4	45,900 *	42.0	40.4	47,000	44.0	48.3	43,800	48.0	51.2	39,400	50.0	55.1	37,100
			44.0	36.7	44,300	46.0	45.8	41,100	50.0	49.0	37,400	55.0	50.5	32,700
			46.0	32.9	41,500	48.0	42.8	39,200	55.0	43.2	33,200	60.0	45.7	29,200
			48.0	27.6	38,300	50.0	39.9	37,200	60.0	36.9	29,600	65.0	40.4	26,300
			50.0	22.3	35,100	55.0	31.2	32,900	65.0	29.2	26,800	70.0	34.3	24,100
						60.0	20.7	28,600 *				75.0	26.9	22,100
Reeves		8	Reeves		8	Reeves		8	Reeves		6	Reeves		6
90' Boom			100' Boom			110' Boom			120' Boom			130' Boom		
Load Radius (ft)	Boom Angle (deg.)	360° Rated Load (lbs)	Load Radius (ft)	Boom Angle (deg.)	360° Rated Load (lbs)	Load Radius (ft)	Boom Angle (deg.)	360° Rated Load (lbs)	Load Radius (ft)	Boom Angle (deg.)	360° Rated Load (lbs)	Load Radius (ft)	Boom Angle (deg.)	360° Rated Load (lbs)
17.0	81.9	125,800 *	19.0	81.6	125,600 *	20.0	81.8	100,800 *	22.0	81.6	98,700 *	24.0	81.3	85,100 *
18.0	81.3	125,800 *	20.0	81.0	123,600 *	22.0	80.8	100,800 *	24.0	80.6	94,200 *	26.0	80.4	83,900 *
19.0	80.7	125,800 *	22.0	79.9	112,200 *	24.0	79.7	96,500 *	26.0	79.6	88,000 *	28.0	79.5	78,200 *
20.0	80.0	124,000 *	24.0	78.7	100,600	26.0	78.6	88,500 *	28.0	78.6	79,900	30.0	78.6	71,900
22.0	78.7	112,500 *	26.0	77.5	88,900	28.0	77.6	80,200	30.0	77.7	72,200	32.0	77.7	65,900
24.0	77.4	100,800	28.0	76.3	80,200	30.0	76.5	72,400	32.0	76.7	66,100	34.0	76.9	60,900
26.0	76.1	89,100	30.0	75.1	72,400	32.0	75.4	66,300	34.0	75.7	61,100	36.0	75.9	56,600
28.0	74.8	80,500	32.0	74.0	66,300	34.0	74.3	61,300	36.0	74.7	56,800	38.0	75.0	52,300
30.0	73.5	72,800	34.0	72.8	61,300	36.0	73.2	57,000	38.0	73.7	52,500	40.0	74.1	48,400
32.0	72.1	66,600	36.0	71.6	57,000	38.0	72.2	52,700	40.0	72.7	48,700	42.0	73.2	45,600
34.0	70.8	61,600	38.0	70.3	52,700	40.0	71.1	48,900	42.0	71.7	45,800	44.0	72.2	42,800
36.0	69.4	57,300	40.0	69.1	48,900	42.0	70.0	46,200	44.0	70.7	43,000	46.0	71.3	40,000
38.0	68.0	53,100	42.0	67.9	46,200	44.0	68.9	43,400	46.0	69.7	40,200	48.0	70.4	38,000
40.0	66.6	49,300	44.0	66.6	43,400	46.0	67.8	40,700	48.0	68.6	38,300	50.0	69.4	36,000
42.0	65.2	46,500	46.0	65.4	40,700	48.0	66.6	38,700	50.0	67.6	36,300	55.0	67.1	31,600
44.0	63.8	43,700	48.0	64.1	38,700	50.0	65.4	36,600	55.0	65.0	32,000	60.0	64.6	28,100
46.0	62.4	40,900	50.0	62.8	36,600	55.0	62.5	32,300	60.0	62.3	28,300	65.0	62.2	25,200
48.0	60.9	38,900	55.0	59.5	32,300	60.0	59.5	28,700	65.0	59.6	25,400	70.0	59.6	22,900
50.0	59.4	36,900	60.0	56.1	28,700	65.0	56.5	25,900	70.0	56.8	23,200	75.0	57.0	20,900
55.0	55.7	32,500	65.0	52.5	25,900	70.0	53.2	23,500	75.0	53.8	21,200	80.0	54.3	19,000
60.0	51.7	29,000	70.0	48.8	23,500	75.0	49.9	21,400	80.0	50.8	19,400	85.0	51.6	17,500
65.0	47.4	26,100	75.0	44.8	21,400	80.0	46.4	19,600	85.0	47.7	17,700	90.0	48.7	16,100
70.0	42.9	23,800	80.0	40.5	19,600	85.0	42.6	18,100	90.0	44.3	16,500	95.0	45.6	15,000
75.0	37.9	21,800	85.0	36.0	18,100	90.0	38.6	16,800	95.0	40.7	15,300	100.0	42.4	14,000
80.0	32.2	20,100	90.0	30.5	16,900	95.0	34.1	15,600	100.0	36.9	14,200	110.0	35.4	12,100
85.0	25.7	18,600	95.0	24.0	15,800	100.0	29.1	14,600	110.0	27.8	12,600	120.0	26.6	10,800
						105.0	23.2	13,770	115.0	22.2	11,840	125.0	21.3	10,230
Reeves		5	Reeves		5	Reeves		4	Reeves		4	Reeves		4

Note: Designed and rated to comply with ANSI Code B30.5
Capacities based on factors other than machine stability such as structural competence are shown by asterisk * in the charts.
Refer to notes on page 20.

CK1100G SPECIFICATIONS

Main Boom Lift Capacity

Full Counterweight: 69,000 lbs Carbody Weight: 31,800

140' Boom			150' Boom			160' Boom			170' Boom			180' Boom		
Load Radius (ft)	Boom Angle (deg.)	360° Rated Load (lbs)	Load Radius (ft)	Boom Angle (deg.)	360° Rated Load (lbs)	Load Radius (ft)	Boom Angle (deg.)	360° Rated Load (lbs)	Load Radius (ft)	Boom Angle (deg.)	360° Rated Load (lbs)	Load Radius (ft)	Boom Angle (deg.)	360° Rated Load (lbs)
24.0	81.9	72,900 *	26.0	81.7	62,200 *	28.0	81.5	50,200 *	30.0	81.3	44,500 *	30.0	81.8	39,300 *
26.0	81.1	71,800 *	28.0	80.9	61,300 *	30.0	80.8	50,100 *	32.0	80.7	43,900 *	32.0	81.2	38,800 *
28.0	80.3	70,800 *	30.0	80.1	60,400 *	32.0	80.1	49,700 *	34.0	80.0	43,200 *	34.0	80.5	38,200 *
30.0	79.4	69,000 *	32.0	79.4	59,400 *	34.0	79.4	49,200 *	36.0	79.3	42,500 *	36.0	79.9	37,600 *
32.0	78.6	64,700 *	34.0	78.6	57,200 *	36.0	78.6	48,500 *	38.0	78.6	41,900 *	38.0	79.2	37,000 *
34.0	77.8	60,500 *	36.0	77.8	54,100 *	38.0	77.9	47,800 *	40.0	77.9	41,200 *	40.0	78.6	36,400 *
36.0	76.9	56,200	38.0	77.0	51,000 *	40.0	77.2	46,600 *	42.0	77.2	40,600 *	42.0	77.9	35,800 *
38.0	76.1	52,000 *	40.0	76.3	48,000 *	42.0	76.4	44,300 *	44.0	76.5	40,000 *	44.0	77.2	35,100 *
40.0	75.2	48,200	42.0	75.5	45,200	44.0	75.6	42,100 *	46.0	75.8	39,300 *	46.0	76.6	34,500 *
42.0	74.4	45,400 *	44.0	74.7	42,400 *	46.0	74.9	39,900 *	48.0	75.1	37,400 *	48.0	75.9	33,900 *
44.0	73.5	42,600	46.0	73.9	39,600	48.0	74.1	37,800	50.0	74.4	35,400 *	50.0	75.3	33,300 *
46.0	72.7	39,800 *	48.0	73.1	37,500 *	50.0	73.4	35,800 *	55.0	72.6	31,200 *	55.0	73.7	30,800 *
48.0	71.8	37,800	50.0	72.3	35,500	55.0	71.5	31,400	60.0	70.9	27,600	60.0	72.0	27,400
50.0	71.0	35,800 *	55.0	70.3	31,200 *	60.0	69.6	27,800 *	65.0	69.1	24,600 *	65.0	70.3	24,400 *
55.0	68.8	31,400	60.0	68.2	27,600	65.0	67.7	25,000	70.0	67.3	22,300	70.0	68.6	21,900
60.0	66.6	27,800 *	65.0	66.2	24,800 *	70.0	65.8	22,600 *	75.0	65.4	20,300 *	75.0	66.9	19,900 *
65.0	64.3	25,000	70.0	64.0	22,400	75.0	63.8	20,500	80.0	63.5	18,500	80.0	65.2	18,100
70.0	62.0	22,600 *	75.0	61.9	20,300 *	80.0	61.8	18,700 *	85.0	61.6	16,800 *	85.0	63.4	16,600 *
75.0	59.7	20,500	80.0	59.6	18,500	85.0	59.7	17,000	90.0	59.7	15,400	90.0	61.6	15,200
80.0	57.3	18,700 *	85.0	57.4	17,000 *	90.0	57.6	15,700 *	95.0	57.8	14,300 *	95.0	59.8	14,000 *
85.0	54.8	17,200	90.0	55.2	15,700	95.0	55.4	14,500	100.0	55.8	13,300	100.0	57.9	12,900
90.0	52.2	15,900 *	95.0	52.8	14,400 *	100.0	53.2	13,500 *	110.0	51.5	11,500 *	110.0	54.0	11,100 *
95.0	49.5	14,600	100.0	50.3	13,400	110.0	48.6	11,700	120.0	47.0	9,800	120.0	49.9	9,600
100.0	46.8	13,600 *	110.0	45.1	11,700 *	120.0	43.6	10,100 *	130.0	42.2	8,700 *	130.0	45.6	8,500 *
110.0	40.8	11,900	120.0	39.3	10,300	130.0	38.1	8,900	140.0	36.8	7,700	140.0	40.9	7,400
120.0	34.0	10,300 *	130.0	32.8	8,900 *	140.0	31.6	7,900 *	150.0	30.5	6,800 *	150.0	35.7	6,500 *
130.0	25.7	9,200	140.0	24.3	8,000	150.0	23.7	7,100	160.0	23.2	5,900	160.0	29.7	5,600
135.0	20.5	8,830 *										165.0	26.5	5,100 *
Reeves 4			Reeves 4			Reeves 2			Reeves 2			Reeves 2		
190' Boom			200' Boom											
Load Radius (ft)	Boom Angle (deg.)	360° Rated Load (lbs)	Load Radius (ft)	Boom Angle (deg.)	360° Rated Load (lbs)									
32.0	81.6	34,400 *	34.0	81.5	30,300 *									
34.0	81.0	33,800 *	36.0	80.9	29,700 *									
36.0	80.4	33,300 *	38.0	80.3	29,200 *									
38.0	79.8	32,700 *	40.0	79.7	28,700 *									
40.0	79.2	32,200 *	42.0	79.1	28,200 *									
42.0	78.6	31,700 *	44.0	78.6	27,700 *									
44.0	78.0	31,100 *	46.0	78.0	27,300 *									
46.0	77.4	30,600 *	48.0	77.4	26,800 *									
48.0	76.7	30,100 *	50.0	76.8	26,300 *									
50.0	76.1	29,600 *	55.0	75.3	24,900 *									
55.0	74.5	28,100 *	60.0	73.8	23,200 *									
60.0	73.0	26,200 *	65.0	72.4	21,500 *									
65.0	71.4	24,000 *	70.0	70.9	20,000 *									
70.0	69.8	21,800 *	75.0	69.3	18,500 *									
75.0	68.2	19,900	80.0	67.8	17,100 *									
80.0	66.5	18,000 *	85.0	66.2	15,900 *									
85.0	64.9	16,400	90.0	64.6	14,700									
90.0	63.2	15,000 *	95.0	63.0	13,500 *									
95.0	61.5	13,900	100.0	61.4	12,400									
100.0	59.7	12,900 *	110.0	58.1	10,600 *									
110.0	56.2	11,000	120.0	54.6	9,200									
120.0	52.5	9,400 *	130.0	51.1	7,800 *									
130.0	48.5	8,200	140.0	47.2	6,500									
140.0	44.3	7,200 *	150.0	43.1	5,200 *									
150.0	39.7	6,300	155.0	41.0	4,650 *									
160.0	34.8	5,300 *												
165.0	32.1	4,650												
Reeves 2			Reeves 2											

Note: Designed and rated to comply with ANSI Code B30.5
Capacities based on factors other than machine stability such as structural competence are shown by asterisk * in the charts.
Refer to notes on page 20.

CK1100G SPECIFICATIONS

Fixed Jib Lift Capacity

Full Counterweight: 69,000 lbs Carbody Weight: 31,800

80' Boom																							
30 ft Jib						40 ft Jib						50 ft Jib						60 ft Jib					
O set Angle (deg.)						O set Angle (deg.)						O set Angle (deg.)						O set Angle (deg.)					
10			30			10			30			10			30			10			30		
Load Radius (ft)	Boom Angle (deg.)	Rated Load (lbs)	Load Radius (ft)	Boom Angle (deg.)	Rated Load (lbs)	Load Radius (ft)	Boom Angle (deg.)	Rated Load (lbs)	Load Radius (ft)	Boom Angle (deg.)	Rated Load (lbs)	Load Radius (ft)	Boom Angle (deg.)	Rated Load (lbs)	Load Radius (ft)	Boom Angle (deg.)	Rated Load (lbs)	Load Radius (ft)	Boom Angle (deg.)	Rated Load (lbs)	Load Radius (ft)	Boom Angle (deg.)	Rated Load (lbs)
30.0	79.3	24,000*				34.0	79.3	24,000*				38.0	79.3	20,000*				40.0	79.8	18,000*			
32.0	78.0	24,000*				36.0	78.3	24,000*				40.0	78.4	20,000*				45.0	77.7	18,000*			
34.0	77.0	24,000*				38.0	77.4	24,000*				45.0	76.1	20,000*				50.0	75.6	17,850*			
36.0	75.9	24,000*				40.0	76.4	24,000*				50.0	73.8	20,000*				55.0	73.3	16,180*			
38.0	74.9	24,000*	38.0	79.6	21,000*	45.0	73.9	24,000*	45.0	79.7	15,360*	55.0	71.3	18,560*	55.0	78.0	11,080*	60.0	71.2	14,850*	60.0	78.7	8,950*
40.0	73.8	24,000*	40.0	78.5	21,000*	50.0	71.4	24,000*	50.0	77.1	14,480*	60.0	68.9	17,080*	60.0	75.5	10,490*	65.0	69.0	13,730*	65.0	76.4	8,480*
45.0	71.1	24,000*	45.0	75.7	20,700*	55.0	68.7	22,480*	55.0	74.3	13,640*	65.0	66.5	15,800*	65.0	73.0	9,980*	70.0	66.7	12,760*	70.0	74.1	8,060*
50.0	68.3	24,000*	50.0	72.8	19,510*	60.0	66.1	20,700*	60.0	71.6	12,980*	70.0	64.0	14,720*	70.0	70.4	9,540*	75.0	64.3	11,860*	75.0	71.5	7,670*
55.0	65.3	24,000*	55.0	69.7	18,380*	65.0	63.4	19,180*	65.0	68.8	12,360*	75.0	61.3	13,710*	75.0	67.6	9,100*	80.0	61.9	11,130*	80.0	69.0	7,340*
60.0	62.4	24,000*	60.0	66.7	17,500*	70.0	60.6	17,870*	70.0	65.9	11,830*	80.0	58.7	12,870*	80.0	64.8	8,730*	85.0	59.5	10,470*	85.0	66.5	7,030*
65.0	59.3	22,920	65.0	63.6	16,710*	75.0	57.6	16,660*	75.0	62.7	11,350*	85.0	56.0	12,140*	85.0	62.0	8,420*	90.0	57.0	9,870*	90.0	63.9	6,760*
70.0	56.2	20,810	70.0	60.3	16,020*	80.0	54.6	15,670*	80.0	59.6	10,930*	90.0	53.2	11,500*	90.0	59.0	8,130*	95.0	54.2	9,320*	95.0	60.9	6,500*
75.0	52.8	18,910	75.0	56.7	15,380*	85.0	51.5	14,810*	85.0	56.3	10,560*	95.0	50.0	10,890*	95.0	55.6	7,840*	100.0	51.5	8,860*	100.0	58.1	6,280*
80.0	49.3	17,370	80.0	53.1	14,850*	90.0	48.3	14,040*	90.0	52.9	10,250*	100.0	46.9	10,360*	100.0	52.3	7,620*	105.0	48.7	8,440*	105.0	55.0	6,100*
85.0	45.7	16,020				95.0	44.6	13,310*				105.0	43.6	9,890*				110.0	45.7	8,060*	110.0	51.8	5,930*
90.0	41.8	14,850				100.0	40.8	12,690*				110.0	40.0	9,470*				115.0	42.3	7,690*			
95.0	37.2	13,750				105.0	36.7	12,120				115.0	35.8	9,080*				120.0	38.8	7,380*			
100.0	32.4	12,830				110.0	32.1	11,350*										125.0	35.1	7,120*			
Reeves	1		Reeves	1		Reeves	1		Reeves	1		Reeves	1		Reeves	1		Reeves	1		Reeves	1	

90' Boom																							
30 ft Jib						40 ft Jib						50 ft Jib						60 ft Jib					
O set Angle (deg.)						O set Angle (deg.)						O set Angle (deg.)						O set Angle (deg.)					
10			30			10			30			10			30			10			30		
Load Radius (ft)	Boom Angle (deg.)	Rated Load (lbs)	Load Radius (ft)	Boom Angle (deg.)	Rated Load (lbs)	Load Radius (ft)	Boom Angle (deg.)	Rated Load (lbs)	Load Radius (ft)	Boom Angle (deg.)	Rated Load (lbs)	Load Radius (ft)	Boom Angle (deg.)	Rated Load (lbs)	Load Radius (ft)	Boom Angle (deg.)	Rated Load (lbs)	Load Radius (ft)	Boom Angle (deg.)	Rated Load (lbs)	Load Radius (ft)	Boom Angle (deg.)	Rated Load (lbs)
32.0	79.1	24,000*				36.0	79.3	24,000*				38.0	80.0	20,000*				45.0	78.6	18,000*			
34.0	78.1	24,000*				38.0	78.4	24,000*				40.0	79.2	20,000*				50.0	76.6	18,000*			
36.0	77.1	24,000*				40.0	77.5	24,000*				45.0	77.1	20,000*				55.0	74.5	16,970*			
38.0	76.2	24,000*				45.0	75.2	24,000*				50.0	75.0	20,000*				60.0	72.5	15,630*	60.0	79.5	9,100*
40.0	75.2	24,000*	40.0	79.5	21,000*	50.0	72.9	24,000*	50.0	78.2	14,810*	55.0	72.7	19,550*	55.0	78.9	11,300*	65.0	70.5	14,460*	65.0	77.4	8,660*
45.0	72.7	24,000*	45.0	77.0	21,000*	55.0	70.4	23,890*	55.0	75.6	14,020*	60.0	70.5	18,000*	60.0	76.7	10,730*	70.0	68.4	13,470*	70.0	75.3	8,240*
50.0	70.2	24,000*	50.0	74.4	20,100*	60.0	68.1	22,020*	60.0	73.2	13,330*	65.0	68.3	16,730*	65.0	74.4	10,250*	75.0	66.1	12,520*	75.0	72.9	7,870*
55.0	67.5	24,000*	55.0	71.6	19,020*	65.0	65.6	20,410*	65.0	70.7	12,760*	70.0	66.1	15,580*	70.0	72.0	9,780*	80.0	64.0	11,770*	80.0	70.7	7,530*
60.0	64.9	24,000*	60.0	68.9	18,120*	70.0	63.2	19,040*	70.0	68.1	12,230*	75.0	63.6	14,520*	75.0	69.5	9,360*	85.0	61.8	11,080*	85.0	68.4	7,230*
65.0	62.2	22,660	65.0	66.1	17,320*	75.0	60.4	17,760*	75.0	65.3	11,720*	80.0	61.3	13,660*	80.0	67.0	8,990*	90.0	59.5	10,470*	90.0	66.0	6,960*
70.0	59.4	20,540	70.0	63.3	16,620*	80.0	57.8	16,730*	80.0	62.5	11,300*	85.0	58.8	12,890*	85.0	64.5	8,680*	95.0	57.1	9,890*	95.0	63.4	6,700*
75.0	56.4	18,620	75.0	60.2	15,960*	85.0	55.1	15,800*	85.0	59.7	10,930*	90.0	56.3	12,210*	90.0	61.8	8,370*	100.0	54.7	9,390*	100.0	60.9	6,480*
80.0	53.5	17,080	80.0	57.1	15,430*	90.0	52.3	14,740	90.0	56.7	10,580*	95.0	53.6	11,570*	95.0	58.9	8,110*	105.0	52.2	8,950*	105.0	58.3	6,280*
85.0	50.4	15,760	85.0	53.9	14,940*	95.0	49.1	13,620	95.0	53.4	10,270*	100.0	50.9	11,020*	100.0	56.1	7,870*	110.0	49.6	8,550*	110.0	55.5	6,100*
90.0	47.1	14,570				100.0	46.0	12,690				105.0	48.0	10,530*				115.0	46.7	8,150*	115.0	52.4	5,930*
95.0	43.4	13,470				105.0	42.7	11,860				110.0	45.1	10,070*				120.0	43.8	7,820*			
100.0	39.7	12,540				110.0	39.1	11,080				115.0	41.7	9,650*				125.0	40.7	7,530*			
105.0	35.6	11,700				115.0	35.0	10,360				120.0	38.2	9,300*				130.0	37.4	7,270*			
												125.0	34.4	8,970*				135.0	33.8	7,010*			
Reeves	1		Reeves	1		Reeves	1		Reeves	1		Reeves	1		Reeves	1		Reeves	1		Reeves	1	

Note: Designed and rated to comply with ANSI Code B30.5
Capacities based on factors other than machine stability such as structural competence are shown by asterisk * in the charts.
Refer to notes on page 20.

CK1100G SPECIFICATIONS

Fixed Jib Lift Capacity

Full Counterweight: 69,000 lbs Carbody Weight: 31,800

100' Boom																									
30 ft Jib						40 ft Jib						50 ft Jib						60 ft Jib							
O set Angle (deg.)						O set Angle (deg.)						O set Angle (deg.)						O set Angle (deg.)							
10			30			10			30			10			30			10			30				
Load Radius (ft)	Boom Angle (deg.)	Rated Load (lbs)	Load Radius (ft)	Boom Angle (deg.)	Rated Load (lbs)	Load Radius (ft)	Boom Angle (deg.)	Rated Load (lbs)	Load Radius (ft)	Boom Angle (deg.)	Rated Load (lbs)	Load Radius (ft)	Boom Angle (deg.)	Rated Load (lbs)	Load Radius (ft)	Boom Angle (deg.)	Rated Load (lbs)	Load Radius (ft)	Boom Angle (deg.)	Rated Load (lbs)	Load Radius (ft)	Boom Angle (deg.)	Rated Load (lbs)		
32.0	79.9	24,000*				36.0	80.0	24,000*				40.0	79.9	20,000*				45.0	79.3	18,000*					
34.0	79.0	24,000*				38.0	79.2	24,000*				45.0	78.0	20,000*				50.0	77.5	18,000*					
36.0	78.1	24,000*				40.0	78.4	24,000*				50.0	76.0	20,000*				55.0	75.5	17,720*					
38.0	77.2	24,000*				45.0	76.3	24,000*				55.0	73.9	20,000*	55.0	79.7	11,500*	60.0	73.7	16,350*					
40.0	76.4	24,000*				50.0	74.2	24,000*	50.0	79.1	15,100*	60.0	71.9	18,930*	60.0	77.7	10,950*	65.0	71.8	15,160*	65.0	78.3	8,810*		
45.0	71.8	24,000*	45.0	78.0	21,000*	55.0	71.9	24,000*	55.0	76.7	14,320*	65.0	69.9	17,590*	65.0	75.5	10,470*	70.0	69.9	14,130*	70.0	76.3	8,420*		
50.0	71.8	24,000*	50.0	75.7	20,650*	60.0	69.7	23,280*	60.0	74.5	13,660*	70.0	67.8	16,420*	70.0	73.4	10,030*	75.0	67.8	13,160*	75.0	74.2	8,040*		
55.0	69.3	24,000*	55.0	73.2	19,570*	65.0	67.5	21,620*	65.0	72.2	13,090*	75.0	65.6	15,340*	75.0	71.1	9,610*	80.0	65.8	12,360*	80.0	72.1	7,710*		
60.0	67.0	24,000*	60.0	70.7	18,690*	70.0	65.3	20,190*	70.0	69.9	12,560*	80.0	63.4	14,440*	80.0	68.8	9,230*	85.0	63.8	11,660*	85.0	70.0	7,420*		
65.0	64.5	22,440	65.0	68.2	17,900*	75.0	62.8	18,620	75.0	67.3	12,050*	85.0	61.2	13,640*	85.0	66.5	8,920*	90.0	61.7	11,040*	90.0	67.9	7,160*		
70.0	62.1	20,320	70.0	65.7	17,190*	80.0	60.4	17,060	80.0	64.9	11,640*	90.0	59.0	12,910*	90.0	64.2	8,610*	95.0	59.5	10,420*	95.0	65.5	6,900*		
75.0	59.4	18,400	75.0	62.9	16,510*	85.0	58.0	15,710	85.0	62.4	11,260*	95.0	56.5	12,230*	95.0	61.6	8,330*	100.0	57.3	9,920*	100.0	63.2	6,670*		
80.0	56.7	16,860	80.0	60.2	15,960*	90.0	55.5	14,500	90.0	59.8	10,910*	100.0	54.1	11,660*	100.0	59.1	8,090*	105.0	55.1	9,450*	105.0	60.9	6,450*		
85.0	54.0	15,520	85.0	57.4	15,450*	95.0	52.8	13,380	95.0	56.9	10,580*	105.0	51.6	11,150*	105.0	56.4	7,870*	110.0	52.7	9,030*	110.0	58.4	6,280*		
90.0	51.2	14,320	90.0	54.5	14,570	100.0	50.1	12,450	100.0	54.0	10,310*	110.0	49.0	10,670*	110.0	53.7	7,690*	115.0	50.2	8,610*	115.0	55.7	6,100*		
95.0	48.1	13,220	95.0	51.2	13,420	105.0	47.2	11,590				115.0	46.1	10,200*				120.0	47.7	8,280*	120.0	53.1	5,950*		
100.0	45.0	12,270				110.0	44.3	10,840				120.0	43.2	9,590				125.0	45.1	7,950*					
105.0	41.7	11,460				115.0	40.9	10,110				125.0	40.2	9,010				130.0	42.3	7,670*					
110.0	38.1	10,690				120.0	37.4	9,470				130.0	36.8	8,480				135.0	39.4	7,400*					
115.0	34.0	9,980				125.0	33.7	8,860*				135.0	33.2	7,800*				140.0	35.9	7,140*					
Reeves	1		Reeves	1		Reeves	1		Reeves	1		Reeves	1		Reeves	1		Reeves	1		Reeves	1		Reeves	1

110' Boom																									
30 ft Jib						40 ft Jib						50 ft Jib						60 ft Jib							
O set Angle (deg.)						O set Angle (deg.)						O set Angle (deg.)						O set Angle (deg.)							
10			30			10			30			10			30			10			30				
Load Radius (ft)	Boom Angle (deg.)	Rated Load (lbs)	Load Radius (ft)	Boom Angle (deg.)	Rated Load (lbs)	Load Radius (ft)	Boom Angle (deg.)	Rated Load (lbs)	Load Radius (ft)	Boom Angle (deg.)	Rated Load (lbs)	Load Radius (ft)	Boom Angle (deg.)	Rated Load (lbs)	Load Radius (ft)	Boom Angle (deg.)	Rated Load (lbs)	Load Radius (ft)	Boom Angle (deg.)	Rated Load (lbs)	Load Radius (ft)	Boom Angle (deg.)	Rated Load (lbs)		
34.0	79.8	24,000*				38.0	79.9	24,000*				45.0	78.8	20,000*				45.0	80.0	18,000*					
36.0	79.0	24,000*				40.0	79.2	24,000*				50.0	76.9	20,000*				50.0	78.3	18,000*					
38.0	78.2	24,000*				45.0	77.2	24,000*				55.0	75.0	20,000*				55.0	76.4	18,000*					
40.0	77.3	24,000*				50.0	75.3	24,000*	50.0	79.9	15,360*	60.0	73.1	19,810*	60.0	78.5	11,150*	60.0	74.7	17,040*					
45.0	75.3	24,000*	45.0	79.0	21,000*	55.0	73.2	24,000*	55.0	77.7	14,610*	65.0	71.2	18,430*	65.0	76.5	10,670*	65.0	72.9	15,820*	65.0	79.1	8,970*		
50.0	73.2	24,000*	50.0	76.8	21,000*	60.0	71.2	24,000*	60.0	75.6	13,970*	70.0	69.3	17,230*	70.0	74.6	10,250*	70.0	71.1	14,770*	70.0	77.2	8,570*		
55.0	70.9	24,000*	55.0	74.5	20,100*	65.0	69.1	22,500	65.0	73.5	13,400*	75.0	67.2	16,110*	75.0	72.4	9,830*	75.0	69.2	13,800*	75.0	75.2	8,200*		
60.0	68.7	24,000*	60.0	72.2	19,220*	70.0	67.1	20,370	70.0	71.4	12,870*	80.0	65.2	15,160*	80.0	70.4	9,470*	80.0	67.3	12,960*	80.0	73.3	7,890*		
65.0	66.5	22,260	65.0	70.0	18,430*	75.0	64.8	18,450	75.0	69.1	12,380*	85.0	63.2	14,350*	85.0	68.3	9,140*	85.0	65.5	12,230*	85.0	71.4	7,580*		
70.0	64.3	20,150	70.0	67.7	17,700*	80.0	62.7	16,880	80.0	66.9	11,940*	90.0	61.2	13,600*	90.0	66.1	8,840*	90.0	63.6	11,590*	90.0	69.4	7,310*		
75.0	61.8	18,230	75.0	65.1	17,040*	85.0	60.5	15,520	85.0	64.6	11,570*	95.0	58.9	12,890*	95.0	63.8	8,550*	95.0	61.5	10,950*	95.0	67.2	7,050*		
80.0	59.4	16,680	80.0	62.7	16,460*	90.0	58.2	14,320	90.0	62.2	11,220*	100.0	56.7	12,300*	100.0	61.5	8,310*	100.0	59.5	10,420*	100.0	65.2	6,830*		
85.0	57.0	15,340	85.0	60.2	15,650	95.0	55.7	13,200	95.0	59.7	10,890*	105.0	54.5	11,530	105.0	59.2	8,090*	105.0	57.5	9,940*	105.0	63.0	6,630*		
90.0	54.5	14,150	90.0	57.6	14,440	100.0	53.3	12,250	100.0	57.1	10,600*	110.0	52.2	10,780	110.0	56.7	7,890*	110.0	55.4	9,500*	110.0	60.8	6,430*		
95.0	51.8	13,020	95.0	54.8	13,270	105.0	50.8	11,410	105.0	54.5	10,330*	115.0	49.6	10,030	115.0	54.0	7,690*	115.0	53.1	9,080*	115.0	58.4	6,260*		
100.0	49.1	12,100	100.0	52.0	12,320	110.0	48.2	10,640	110.0	51.8	10,110*	120.0	47.1	9,390				120.0	50.9	8,700*	120.0	56.1	6,100*		
105.0	46.3	11,260				115.0	45.3	9,920				125.0	44.5	8,810				125.0	48.6	8,370*	125.0	53.6	5,970*		
110.0	43.3	10,510				120.0	42.5	9,300				130.0	41.8	8,280				130.0	46.2	8,060*					
115.0	39.9	9,780				125.0	39.4	8,730				135.0	38.8	7,800				135.0	43.6	7,780*					
120.0	36.5	9,170				130.0	36.1	8,200				140.0	35.4	7,250*				140.0	40.8	7,380					
125.0	32.7	8,420*				135.0	32.5	7,420*										145.0	37.9	6,960					
																			150.0	34.8	6,370*				
Reeves	1		Reeves	1		Reeves	1		Reeves	1		Reeves	1		Reeves	1		Reeves	1		Reeves	1		Reeves	1

Note: Designed and rated to comply with ANSI Code B30.5
Capacities based on factors other than machine stability such as structural competence are shown by asterisk * in the charts.
Refer to notes on page 20.

CK1100G SPECIFICATIONS

Fixed Jib Lift Capacity

Full Counterweight: 69,000 lbs Carbody Weight: 31,800

120' Boom																									
30 ft Jib						40 ft Jib						50 ft Jib						60 ft Jib							
O set Angle (deg.)						O set Angle (deg.)						O set Angle (deg.)						O set Angle (deg.)							
10			30			10			30			10			30			10			30				
Load Radius (ft)	Boom Angle (deg.)	Rated Load (lbs)	Load Radius (ft)	Boom Angle (deg.)	Rated Load (lbs)	Load Radius (ft)	Boom Angle (deg.)	Rated Load (lbs)	Load Radius (ft)	Boom Angle (deg.)	Rated Load (lbs)	Load Radius (ft)	Boom Angle (deg.)	Rated Load (lbs)	Load Radius (ft)	Boom Angle (deg.)	Rated Load (lbs)	Load Radius (ft)	Boom Angle (deg.)	Rated Load (lbs)	Load Radius (ft)	Boom Angle (deg.)	Rated Load (lbs)		
36.0	79.7	24,000*				40.0	79.9	24,000*				45.0	79.5	20,000*				50.0	78.9	18,000*					
38.0	79.0	24,000*				45.0	78.1	24,000*				50.0	77.7	20,000*				55.0	77.2	18,000*					
40.0	78.2	24,000*				50.0	76.2	24,000*				55.0	75.9	20,000*				60.0	75.5	17,720*					
45.0	76.3	24,000*	45.0	79.7	21,000*	55.0	74.3	24,000*	55.0	78.5	14,880*	60.0	74.2	20,000*	60.0	79.2	11,330*	65.0	73.9	16,460*	65.0	79.7	9,080*		
50.0	74.3	24,000*	50.0	77.7	21,000*	60.0	72.4	24,000*	60.0	76.6	14,240*	65.0	72.4	19,240*	65.0	77.4	10,860*	70.0	72.2	15,380*	70.0	78.0	8,700*		
55.0	72.2	24,000*	55.0	75.6	20,560*	65.0	70.5	22,240*	65.0	74.7	13,690*	70.0	70.6	18,010*	70.0	75.6	10,420*	75.0	70.4	14,390*	75.0	76.1	8,350*		
60.0	70.2	24,000*	60.0	73.5	19,680*	70.0	68.6	20,100*	70.0	72.7	13,160*	75.0	68.7	16,840*	75.0	73.6	10,030*	80.0	68.7	13,550*	80.0	74.4	8,040*		
65.0	68.2	21,970*	65.0	71.4	18,910*	75.0	66.5	18,160*	75.0	70.6	12,670*	80.0	66.8	15,890*	80.0	71.7	9,670*	85.0	67.0	12,780*	85.0	72.6	7,730*		
70.0	66.1	19,860*	70.0	69.3	18,180*	80.0	64.5	16,620*	80.0	68.5	12,250*	85.0	65.0	15,030*	85.0	69.7	9,340*	90.0	65.2	12,120*	90.0	70.7	7,470*		
75.0	63.9	17,940*	75.0	67.0	17,500*	85.0	62.5	15,250*	85.0	66.4	11,860*	90.0	63.1	14,190*	90.0	67.8	9,060*	95.0	63.3	11,480*	95.0	68.7	7,230*		
80.0	61.7	16,400*	80.0	64.8	16,790*	90.0	60.5	14,040*	90.0	64.3	11,500*	95.0	61.0	13,050*	95.0	65.6	8,770*	100.0	61.5	10,930*	100.0	66.8	7,010*		
85.0	59.5	15,050*	85.0	62.6	15,410*	95.0	58.2	12,910*	95.0	62.0	11,170*	100.0	59.0	12,100*	100.0	63.6	8,500*	105.0	59.6	10,420*	105.0	64.9	6,790*		
90.0	57.3	13,860*	90.0	60.2	14,170*	100.0	56.0	11,970*	100.0	59.7	10,860*	105.0	57.0	11,260*	105.0	61.4	8,280*	110.0	57.7	9,960*	110.0	62.9	6,610*		
95.0	54.8	12,740*	95.0	57.7	13,020*	105.0	53.8	11,130*	105.0	57.4	10,600*	110.0	54.9	10,490*	110.0	59.3	8,060*	115.0	55.6	9,520*	115.0	60.7	6,410*		
100.0	52.4	11,790*	100.0	55.2	12,050*	110.0	51.5	10,360*	110.0	55.0	10,360*	115.0	52.6	9,740*	115.0	56.8	7,870*	120.0	53.6	9,140*	120.0	58.6	6,260*		
105.0	49.9	10,950*	105.0	52.6	11,170*	115.0	48.9	9,630*	115.0	52.3	9,870*	120.0	50.4	9,100*	120.0	54.5	7,690*	125.0	51.5	8,610*	125.0	56.4	6,100*		
110.0	47.3	10,200*				120.0	46.5	8,990*				125.0	48.1	8,530*				130.0	49.3	8,060*	130.0	54.1	5,970*		
115.0	44.4	9,470*				125.0	43.8	8,420*				130.0	45.6	8,000*				135.0	47.1	7,580*	135.0	51.7	5,860*		
120.0	41.6	8,860*				130.0	41.1	7,890*				135.0	43.1	7,510*				140.0	44.6	7,090*					
125.0	38.5	8,280*				135.0	38.1	7,420*				140.0	40.3	7,030*				145.0	42.2	6,670*					
130.0	35.2	7,690*				140.0	34.7	6,700*				145.0	37.4	6,540*				150.0	39.6	6,300*					
135.0	31.6	6,830*										150.0	34.3	5,880*				160.0	33.6	5,090*					
Reeves	1		Reeves	1		Reeves	1		Reeves	1		Reeves	1		Reeves	1		Reeves	1		Reeves	1		Reeves	1

130' Boom																									
30 ft Jib						40 ft Jib						50 ft Jib						60 ft Jib							
O set Angle (deg.)						O set Angle (deg.)						O set Angle (deg.)						O set Angle (deg.)							
10			30			10			30			10			30			10			30				
Load Radius (ft)	Boom Angle (deg.)	Rated Load (lbs)	Load Radius (ft)	Boom Angle (deg.)	Rated Load (lbs)	Load Radius (ft)	Boom Angle (deg.)	Rated Load (lbs)	Load Radius (ft)	Boom Angle (deg.)	Rated Load (lbs)	Load Radius (ft)	Boom Angle (deg.)	Rated Load (lbs)	Load Radius (ft)	Boom Angle (deg.)	Rated Load (lbs)	Load Radius (ft)	Boom Angle (deg.)	Rated Load (lbs)	Load Radius (ft)	Boom Angle (deg.)	Rated Load (lbs)		
38.0	79.7	24,000*				45.0	78.8	24,000*				45.0	80.0	20,000*				50.0	79.5	18,000*					
40.0	79.0	24,000*				50.0	77.1	24,000*				50.0	78.4	20,000*				55.0	77.9	18,000*					
45.0	77.1	24,000*				55.0	75.2	24,000*				55.0	76.7	20,000*				60.0	76.3	18,000*					
50.0	75.3	24,000*	50.0	78.5	21,000*	60.0	73.5	24,000*	60.0	77.5	14,500*	60.0	75.1	20,000*	60.0	79.9	11,480*	65.0	74.8	17,100*					
55.0	73.4	24,000*	55.0	76.5	20,980*	65.0	71.7	22,000*	65.0	75.7	13,930*	65.0	73.4	20,000*	65.0	78.2	11,020*	70.0	73.2	16,000*			70.0	78.7	8,840*
60.0	71.5	24,000*	60.0	74.6	20,120*	70.0	69.9	19,860*	70.0	73.8	13,420*	70.0	71.7	18,760*	70.0	76.5	10,620*	75.0	71.5	14,960*	75.0	76.9	8,480*		
65.0	69.6	21,730*	65.0	72.7	19,350*	75.0	68.0	17,920*	75.0	71.8	12,940*	75.0	69.9	17,570*	75.0	74.6	10,200*	80.0	69.9	14,100*	80.0	75.3	8,170*		
70.0	67.7	19,620*	70.0	70.7	18,650*	80.0	66.2	16,350*	80.0	69.9	12,520*	80.0	68.2	16,530*	80.0	72.8	9,850*	85.0	68.3	13,330*	85.0	73.6	7,890*		
75.0	65.6	17,680*	75.0	68.6	17,960*	85.0	64.3	14,990*	85.0	68.0	12,140*	85.0	66.5	15,160*	85.0	71.0	9,540*	90.0	66.6	12,630*	90.0	71.9	7,620*		
80.0	63.7	16,130*	80.0	66.6	16,600*	90.0	62.4	13,800*	90.0	66.1	11,770*	90.0	64.7	13,950*	90.0	69.2	9,230*	95.0	64.8	11,970*	95.0	70.0	7,360*		
85.0	61.6	14,790*	85.0	64.5	15,180*	95.0	60.3	12,650*	95.0	63.9	11,440*	95.0	62.8	12,800*	95.0	67.2	8,950*	100.0	63.1	11,410*	100.0	68.3	7,140*		
90.0	59.6	13,600*	90.0	62.4	13,950*	100.0	58.3	11,700*	100.0	61.9	11,130*	100.0	61.0	11,860*	100.0	65.3	8,700*	105.0	61.4	10,890*	105.0	66.5	6,940*		
95.0	57.3	12,470*	95.0	60.1	12,780*	105.0	56.3	10,860*	105.0	59.8	10,860*	105.0	59.1	11,000*	105.0	63.4	8,480*	110.0	59.6	10,310*	110.0	64.6	6,740*		
100.0	55.2	11,530*	100.0	57.9	11,810*	110.0	54.2	10,090*	110.0	57.6	10,420*	110.0	57.2	10,220*	110.0	61.4	8,260*	115.0	57.7	9,560*	115.0	62.6	6,560*		
105.0	52.9	10,690*	105.0	55.6	10,950*	115.0	51.9	9,360*	115.0	55.2	9,650*	115.0	55.1	9,470*	115.0	59.2	8,040*	120.0	55.9	8,920*	120.0	60.7	6,390*		
110.0	50.6	9,940*	110.0	53.2	10,160*	120.0	49.7	8,730*	120.0	52.9	8,990*	120.0	53.1	8,840*	120.0	57.1	7,870*	125.0	54.0	8,350*	125.0	58.7	6,230*		
115.0	48.1	9,210*				125.0	47.4	8,150*				125.0	51.0	8,260*	125.0	54.9	7,710*	130.0	52.0	7,820*	130.0	56.6	6,100*		
120.0	45.6	8,570*				130.0	45.0	7,620*				130.0	48.8	7,730*	130.0	52.6	7,560*	135.0	50.0	7,310*	135.0	54.5	5,970*		
125.0	43.0	8,020*				135.0	42.5	7,140*				135.0	46.6	7,250*				140.0	47.8	6,830*	140.0	52.2	5,860*		
130.0	40.2	7,490*				140.0	39.6	6,670*				140.0	44.1	6,760*				145.0	45.6	6,410*					
135.0	37.3	6,940*				145.0	36.8	6,040*				145.0	41.7	6,340*				150.0	43.3	6,040*					
140.0	33.9	6,150*				150.0	33.7	5,370*				150.0	39.1	5,860*				155.0	41.0	5,620*					
												155.0	36.3	5,260*				160.0	38.3	5,040*					
												160.0	33.1	4,650*				170.0	32.7	4,010*					
Reeves	1		Reeves	1		Reeves	1		Reeves	1		Reeves	1		Reeves	1		Reeves	1		Reeves	1		Reeves	1

Note: Designed and rated to comply with ANSI Code B30.5
 Capacities based on factors other than machine stability such as structural competence are shown by asterisk * in the charts.
 Refer to notes on page 20.

CK1100G SPECIFICATIONS

Fixed Jib Lift Capacity

Full Counterweight: 69,000 lbs Carbody Weight: 31,800

140' Boom																							
30 ft Jib						40 ft Jib						50 ft Jib						60 ft Jib					
O set Angle (deg.)						O set Angle (deg.)						O set Angle (deg.)						O set Angle (deg.)					
10			30			10			30			10			30			10			30		
Load Radius (ft)	Boom Angle (deg.)	Rated Load (lbs)	Load Radius (ft)	Boom Angle (deg.)	Rated Load (lbs)	Load Radius (ft)	Boom Angle (deg.)	Rated Load (lbs)	Load Radius (ft)	Boom Angle (deg.)	Rated Load (lbs)	Load Radius (ft)	Boom Angle (deg.)	Rated Load (lbs)	Load Radius (ft)	Boom Angle (deg.)	Rated Load (lbs)	Load Radius (ft)	Boom Angle (deg.)	Rated Load (lbs)			
40.0	79.6	24,000*				45.0	79.4	24,000*				50.0	79.1	20,000*				55.0	78.5	18,000*			
45.0	77.9	24,000*				50.0	77.8	24,000*				55.0	77.4	20,000*				60.0	77.0	18,000*			
50.0	76.2	24,000*	50.0	79.2	21,000*	55.0	76.1	24,000*	55.0	79.9	15,320*	60.0	75.9	20,000*				65.0	75.6	17,700*			
55.0	74.4	24,000*	55.0	77.4	21,000*	60.0	74.4	24,000*	60.0	78.2	14,720*	65.0	74.3	20,000*	65.0	78.8	11,170*	70.0	74.1	16,570*	70.0	79.3	8,950*
60.0	72.6	23,980	60.0	75.6	20,540*	65.0	72.8	21,730	65.0	76.5	14,170*	70.0	72.8	19,480*	70.0	77.2	10,780*	75.0	72.5	15,520*	75.0	77.7	8,590*
65.0	70.9	21,450	65.0	73.8	19,770*	70.0	71.1	19,590	70.0	74.8	13,690*	75.0	71.1	17,850	75.0	75.5	10,380*	80.0	71.0	14,630*	80.0	76.1	8,310*
70.0	69.1	19,330	70.0	72.0	19,060*	75.0	69.3	17,650	75.0	72.9	13,180*	80.0	69.4	16,260	80.0	73.8	10,030*	85.0	69.4	13,840*	85.0	74.5	8,020*
75.0	67.2	17,390	75.0	70.0	17,940	80.0	67.6	16,090	80.0	71.2	12,760*	85.0	67.8	14,880	85.0	72.1	9,720*	90.0	67.9	13,130*	90.0	72.9	7,760*
80.0	65.3	15,850	80.0	68.1	16,330	85.0	65.9	14,720	85.0	69.4	12,380*	90.0	66.2	13,660	90.0	70.4	9,430*	95.0	66.2	12,450*	95.0	71.2	7,510*
85.0	63.5	14,480	85.0	66.2	14,940	90.0	64.1	13,510	90.0	67.6	12,030*	95.0	64.4	12,520	95.0	68.6	9,120*	100.0	64.6	11,680	100.0	69.5	7,270*
90.0	61.6	13,290	90.0	64.3	13,690	95.0	62.2	12,360	95.0	65.6	11,680*	100.0	62.7	11,570	100.0	66.8	8,880*	105.0	63.0	10,820	105.0	67.8	7,070*
95.0	59.5	12,160	95.0	62.2	12,540	100.0	60.3	11,410	100.0	63.7	11,370*	105.0	60.9	10,710	105.0	65.0	8,660*	110.0	61.4	10,050	110.0	66.1	6,870*
100.0	57.5	11,220	100.0	60.1	11,550	105.0	58.5	10,580	105.0	61.8	10,970	110.0	59.2	9,940	110.0	63.2	8,440*	115.0	59.6	9,300	115.0	64.3	6,700*
105.0	55.5	10,380	105.0	58.1	10,690	110.0	56.6	9,810	110.0	59.8	10,180	115.0	57.3	9,190	115.0	61.2	8,220*	120.0	57.9	8,660	120.0	62.5	6,520*
110.0	53.4	9,630	110.0	55.9	9,890	115.0	54.5	9,060	115.0	57.6	9,410	120.0	55.4	8,550	120.0	59.3	8,040*	125.0	56.1	8,060	125.0	60.7	6,370*
115.0	51.1	8,900	115.0	53.5	9,120	120.0	52.5	8,420	120.0	55.5	8,730	125.0	53.5	7,980	125.0	57.3	7,870*	130.0	54.3	7,530	130.0	58.8	6,230*
120.0	48.9	8,260	120.0	51.3	8,480	125.0	50.4	7,840	125.0	53.4	8,130	130.0	51.6	7,450	130.0	55.3	7,710*	135.0	52.5	7,030	135.0	56.9	6,100*
125.0	46.6	7,690				130.0	48.2	7,310				135.0	49.5	6,940	135.0	53.1	7,250	140.0	50.5	6,540	140.0	54.7	5,970*
130.0	44.2	7,180				135.0	46.0	6,830				140.0	47.3	6,450				145.0	48.5	6,120	145.0	52.7	5,860*
135.0	41.7	6,700				140.0	43.5	6,370				145.0	45.1	6,040				150.0	46.5	5,730			
140.0	38.8	6,060*				145.0	41.1	5,880*				150.0	42.9	5,640*				155.0	44.4	5,350*			
145.0	36.0	5,400*				150.0	38.5	5,290*				155.0	40.5	5,090*				160.0	42.0	4,820*			
150.0	32.9	4,760*				155.0	35.7	4,690*				160.0	37.8	4,540*				165.0	39.7	4,340*			
						160.0	32.5	4,070*				170.0	32.2	3,500*				175.0	34.7	3,410*			
Reeves	1		Reeves	1		Reeves	1		Reeves	1		Reeves	1		Reeves	1		Reeves	1		Reeves	1	

150' Boom																							
30 ft Jib						40 ft Jib						50 ft Jib						60 ft Jib					
O set Angle (deg.)						O set Angle (deg.)						O set Angle (deg.)						O set Angle (deg.)					
10			30			10			30			10			30			10			30		
Load Radius (ft)	Boom Angle (deg.)	Rated Load (lbs)	Load Radius (ft)	Boom Angle (deg.)	Rated Load (lbs)	Load Radius (ft)	Boom Angle (deg.)	Rated Load (lbs)	Load Radius (ft)	Boom Angle (deg.)	Rated Load (lbs)	Load Radius (ft)	Boom Angle (deg.)	Rated Load (lbs)	Load Radius (ft)	Boom Angle (deg.)	Rated Load (lbs)	Load Radius (ft)	Boom Angle (deg.)	Rated Load (lbs)			
45.0	78.6	24,000*				45.0	80.0	24,000*				50.0	79.6	20,000*				55.0	79.1	18,000*			
50.0	77.0	24,000*	50.0	79.9	21,000*	50.0	78.5	24,000*				55.0	78.1	20,000*				60.0	77.7	18,000*			
55.0	75.3	24,000*	55.0	78.1	21,000*	55.0	76.8	24,000*				60.0	76.6	20,000*				65.0	76.3	18,000*			
60.0	73.6	23,800	60.0	76.4	20,890*	60.0	75.3	24,000*	60.0	78.9	14,920*	65.0	75.1	20,000*	65.0	79.4	11,330*	70.0	74.9	17,120*	70.0	79.9	9,060*
65.0	72.0	21,270	65.0	74.8	20,150*	65.0	73.7	21,580	65.0	77.3	14,390*	70.0	73.7	19,640	70.0	77.9	10,930*	75.0	73.4	16,040*	75.0	78.3	8,700*
70.0	70.3	19,150	70.0	73.1	19,440*	70.0	72.1	19,420	70.0	75.7	13,910*	75.0	72.1	17,680	75.0	76.3	10,530*	80.0	71.9	15,160*	80.0	76.8	8,420*
75.0	68.5	17,210	75.0	71.2	17,810	75.0	70.5	17,480	75.0	73.9	13,420*	80.0	70.5	16,090	80.0	74.7	10,200*	85.0	70.5	14,350*	85.0	75.3	8,130*
80.0	66.8	15,670	80.0	69.5	16,200	80.0	68.8	15,890	80.0	72.3	13,000*	85.0	69.0	14,700	85.0	73.1	9,870*	90.0	69.0	13,620	90.0	73.8	7,890*
85.0	65.1	14,300	85.0	67.7	14,790	85.0	67.2	14,520	85.0	70.6	12,630*	90.0	67.5	13,490	90.0	71.5	9,590*	95.0	67.4	12,450	95.0	72.2	7,620*
90.0	63.3	13,110	90.0	65.9	13,530	90.0	65.6	13,310	90.0	68.9	12,270*	95.0	65.8	12,340	95.0	69.8	9,300*	100.0	65.9	11,500	100.0	70.6	7,400*
95.0	61.4	11,990	95.0	63.9	12,360	95.0	63.8	12,190	95.0	67.1	11,920*	100.0	64.2	11,390	100.0	68.2	9,060*	105.0	64.4	10,640	105.0	69.1	7,200*
100.0	59.6	11,040	100.0	62.1	11,390	100.0	62.1	11,240	100.0	65.3	11,610*	105.0	62.6	10,530	105.0	66.5	8,810*	110.0	62.9	9,850	110.0	67.5	7,010*
105.0	57.7	10,200	105.0	60.2	10,510	105.0	60.3	10,380	105.0	63.5	10,820	110.0	60.9	9,760	110.0	64.8	8,590*	115.0	61.2	9,100	115.0	65.7	6,830*
110.0	55.8	9,430	110.0	58.2	9,720	110.0	58.6	9,610	110.0	61.7	10,030	115.0	59.1	9,010	115.0	62.9	8,390*	120.0	59.6	8,460	120.0	64.1	6,650*
115.0	53.7	8,700	115.0	56.1	8,970	115.0	56.7	8,860	115.0	59.7	9,230	120.0	57.4	8,370	120.0	61.2	8,200*	125.0	58.0	7,870	125.0	62.4	6,500*
120.0	51.7	8,090	120.0	54.0	8,310	120.0	54.8	8,240	120.0	57.8	8,570	125.0	55.7	7,780	125.0	59.3	8,020*	130.0	56.3	7,340	130.0	60.7	6,370*
125.0	49.6	7,510	125.0	51.8	7,710	125.0	52.9	7,670	125.0	55.8	7,950	130.0	53.9	7,250	130.0	57.5	7,620	135.0	54.6	6,830	135.0	58.9	6,210*
130.0	47.5	6,980				130.0	51.0	7,140	130.0	53.8	7,400	135.0	52.0	6,740	135.0	55.6	7,090	140.0	52.8	6,340	140.0	57.0	6,080*
135.0	45.3	6,500				135.0	49.0	6,630				140.0	50.0	6,260	140.0	53.4	6,590	145.0	51.0	5,930	145.0	55.1	5,970*
140.0	42.8	6,010*				140.0	46.7	6,170				145.0	48.1	5,840				150.0	49.2	5,530	150.0	53.1	5,880
145.0	40.3	5,420*				145.0	44.6	5,750				150.0	46.0	5,460				155.0	47.3	5,150*			
150.0	37.8	4,820*				150.0	42.3	5,220*				155.0	43.9	4,980*				160.0	45.2	4,670*			
155.0	35.0	4,250*				155.0	39.9	4,690*				160.0	41.6	4,450*				165.0	43.1	4,230*			
160.0	31.8	3,650*				160.0	37.3	4,140*				165.0	39.3	3,990*				170.0	41.0	3,790*			
						165.0	34.6	3,610*				170.0	36.8	3,520*				175.0	38.7	3,370*			
Reeves	1		Reeves	1		Reeves	1		Reeves	1		Reeves	1		Reeves	1		Reeves	1		Reeves	1	

Note: Designed and rated to comply with ANSI Code B30.5

Capacities based on factors other than machine stability such as structural competence are shown by asterisk * in the charts.

Refer to notes on page 20.

CK1100G SPECIFICATIONS

Fixed Jib Lift Capacity

Full Counterweight: 69,000 lbs Carbody Weight: 31,800

160' Boom																							
30 ft Jib						40 ft Jib						50 ft Jib						60 ft Jib					
O set Angle (deg.)						O set Angle (deg.)						O set Angle (deg.)						O set Angle (deg.)					
10			30			10			30			10			30			10			30		
Load Radius (ft)	Boom Angle (deg.)	Rated Load (lbs)	Load Radius (ft)	Boom Angle (deg.)	Rated Load (lbs)	Load Radius (ft)	Boom Angle (deg.)	Rated Load (lbs)	Load Radius (ft)	Boom Angle (deg.)	Rated Load (lbs)	Load Radius (ft)	Boom Angle (deg.)	Rated Load (lbs)	Load Radius (ft)	Boom Angle (deg.)	Rated Load (lbs)	Load Radius (ft)	Boom Angle (deg.)	Rated Load (lbs)			
45.0	79.2	24,000*				50.0	79.0	24,000*				55.0	78.7	20,000*				55.0	79.6	18,000*			
50.0	77.7	24,000*				55.0	77.5	24,000*				60.0	77.3	20,000*				60.0	78.3	18,000*			
55.0	76.1	24,000*	55.0	78.8	21,000*	60.0	76.0	24,000*	60.0	79.5	15,120*	65.0	75.9	20,000*	65.0	80.0	11,440*	65.0	76.9	18,000*			
60.0	74.5	23,720	60.0	77.2	21,000*	65.0	74.6	21,470	65.0	78.0	14,590*	70.0	74.5	19,530	70.0	78.5	11,060*	70.0	75.6	17,650*	70.0	80.4	9,140*
65.0	73.0	21,180	65.0	75.6	20,500*	70.0	73.1	19,310	70.0	76.4	14,100*	75.0	72.9	17,570	75.0	77.0	10,670*	75.0	74.1	16,570*	75.0	78.9	8,810*
70.0	71.4	19,040	70.0	74.0	19,730	75.0	71.5	17,370	75.0	74.8	13,640*	80.0	71.5	15,980	80.0	75.5	10,330*	80.0	72.8	15,670*	80.0	77.5	8,530*
75.0	69.7	17,100	75.0	72.3	17,720	80.0	70.0	15,780	80.0	73.2	13,220*	85.0	70.1	14,590	85.0	74.0	10,030*	85.0	71.4	14,700	85.0	76.1	8,240*
80.0	68.1	15,540	80.0	70.7	16,090	85.0	68.4	14,410	85.0	71.7	12,850*	90.0	68.6	13,350	90.0	72.5	9,740*	90.0	70.0	13,490	90.0	74.6	8,000*
85.0	66.5	14,190	85.0	69.0	14,680	90.0	66.9	13,200	90.0	70.1	12,500*	95.0	67.0	12,210	95.0	70.9	9,450*	95.0	68.5	12,340	95.0	73.1	7,760*
90.0	64.8	12,980	90.0	67.3	13,440	95.0	65.2	12,050	95.0	68.4	12,140*	100.0	65.5	11,260	100.0	69.3	9,210*	100.0	67.1	11,370	100.0	71.6	7,530*
95.0	63.0	11,860	95.0	65.5	12,270	100.0	63.6	11,110	100.0	66.7	11,640	105.0	64.0	10,400	105.0	67.8	8,970*	105.0	65.7	10,490	105.0	70.2	7,310*
100.0	61.3	10,910	100.0	63.8	11,280	105.0	62.0	10,250	105.0	65.1	10,730	110.0	62.5	9,610	110.0	66.2	8,770*	110.0	64.2	9,720	110.0	68.7	7,140*
105.0	59.6	10,070	105.0	62.0	10,400	110.0	60.4	9,470	110.0	63.4	9,920	115.0	60.8	8,860	115.0	64.5	8,550*	115.0	62.7	8,970	115.0	67.0	6,940*
110.0	57.9	9,300	110.0	60.2	9,610	115.0	58.6	8,730	115.0	61.5	9,120	120.0	59.2	8,220	120.0	62.8	8,350*	120.0	61.2	8,310	120.0	65.5	6,790*
115.0	55.9	8,550	115.0	58.5	8,840	120.0	56.9	8,090	120.0	59.8	8,460	125.0	57.6	7,620	125.0	61.1	8,090	125.0	59.7	7,730	125.0	63.9	6,610*
120.0	54.1	7,930	120.0	56.3	8,200	125.0	55.1	7,510	125.0	58.0	7,840	130.0	55.9	7,090	130.0	59.4	7,510	130.0	58.1	7,180	130.0	62.3	6,480*
125.0	52.2	7,360	125.0	54.4	7,580	130.0	53.3	6,960	130.0	56.1	7,270	135.0	54.2	6,590	135.0	57.6	6,980	135.0	56.5	6,670	135.0	60.7	6,340*
130.0	50.2	6,830	130.0	52.4	7,030	135.0	51.5	6,480	135.0	54.2	6,760	140.0	52.4	6,100	140.0	55.7	6,450	140.0	54.8	6,190	140.0	58.9	6,210*
135.0	48.2	6,320				140.0	49.5	5,990	140.0	52.1	6,260	145.0	50.6	5,680	145.0	53.8	5,990	145.0	53.2	5,770	145.0	57.1	6,080*
140.0	46.0	5,860				145.0	47.5	5,570				150.0	48.7	5,290	150.0	51.9	5,570	150.0	51.5	5,370	150.0	55.4	5,750
145.0	43.9	5,310*				150.0	45.5	5,090*				155.0	46.8	4,800*				155.0	49.7	4,960*	155.0	53.5	5,350
150.0	41.6	4,760*				155.0	43.4	4,580*				160.0	44.7	4,320*				160.0	47.8	4,490*	160.0	51.5	4,960
155.0	39.2	4,230*				160.0	41.1	4,050*				165.0	42.7	3,880*				165.0	46.0	4,050*			
160.0	36.6	3,680*				165.0	38.7	3,590*				170.0	40.6	3,430*				170.0	44.1	3,650*			
165.0	33.9	3,170*				170.0	36.3	3,100*				175.0	38.3	3,020*				175.0	42.1	3,240*			
Reeves	1	Reeves	1	Reeves	1	Reeves	1	Reeves	1	Reeves	1	Reeves	1	Reeves	1	Reeves	1	Reeves	1	Reeves	1	Reeves	1

170' Boom																							
30 ft Jib						40 ft Jib						50 ft Jib						60 ft Jib					
O set Angle (deg.)						O set Angle (deg.)						O set Angle (deg.)						O set Angle (deg.)					
10			30			10			30			10			30			10			30		
Load Radius (ft)	Boom Angle (deg.)	Rated Load (lbs)	Load Radius (ft)	Boom Angle (deg.)	Rated Load (lbs)	Load Radius (ft)	Boom Angle (deg.)	Rated Load (lbs)	Load Radius (ft)	Boom Angle (deg.)	Rated Load (lbs)	Load Radius (ft)	Boom Angle (deg.)	Rated Load (lbs)	Load Radius (ft)	Boom Angle (deg.)	Rated Load (lbs)	Load Radius (ft)	Boom Angle (deg.)	Rated Load (lbs)			
45.0	79.8	24,000*				50.0	79.6	24,000*				55.0	79.2	20,000*				55.0	80.0	18,000*			
50.0	78.3	24,000*				55.0	78.1	24,000*				60.0	77.9	20,000*				60.0	78.8	18,000*			
55.0	76.8	24,000*	55.0	79.4	21,000*	60.0	76.7	23,800	60.0	80.0	15,290*	65.0	76.5	20,000*	65.0	80.0	11,170*	65.0	77.5	18,000*			
60.0	75.3	23,500	60.0	77.9	21,000*	65.0	75.3	21,250	65.0	78.6	14,770*	70.0	75.2	19,310	70.0	79.1	11,170*	70.0	76.2	18,000*			
65.0	73.8	20,940	65.0	76.4	20,830*	70.0	73.9	19,090	70.0	77.1	14,300*	75.0	73.8	17,350	75.0	77.6	10,800*	75.0	74.9	17,080*	75.0	79.4	8,900*
70.0	72.4	18,820	70.0	74.9	19,530	75.0	72.4	17,150	75.0	75.6	13,840*	80.0	72.4	15,760	80.0	76.2	10,490*	80.0	73.6	15,890	80.0	78.1	8,610*
75.0	70.8	16,880	75.0	73.2	17,520	80.0	71.0	15,560	80.0	74.1	13,420*	85.0	71.0	14,370	85.0	74.8	10,180*	85.0	72.3	14,500	85.0	76.7	8,350*
80.0	69.3	15,320	80.0	71.7	15,890	85.0	69.5	14,170	85.0	72.6	13,050*	90.0	69.6	13,130	90.0	73.4	9,890*	90.0	71.0	13,270	90.0	75.4	8,110*
85.0	67.7	13,950	85.0	70.1	14,480	90.0	68.1	12,960	90.0	71.1	12,690*	95.0	68.2	11,990	95.0	71.9	9,610*	95.0	69.5	12,100	95.0	73.9	7,870*
90.0	66.2	12,740	90.0	68.6	13,240	95.0	66.5	11,810	95.0	69.5	12,360*	100.0	66.7	11,020	100.0	70.4	9,360*	100.0	68.2	11,150	100.0	72.5	7,640*
95.0	64.5	11,610	95.0	66.9	12,050	100.0	65.0	10,860	100.0	68.0	11,440	105.0	65.3	10,160	105.0	68.9	9,120*	105.0	66.8	10,270	105.0	71.1	7,450*
100.0	62.9	10,670	100.0	65.2	11,080	105.0	63.5	10,000	105.0	66.4	10,530	110.0	63.9	9,390	110.0	67.4	8,900*	110.0	65.5	9,470	110.0	69.7	7,250*
105.0	61.3	9,810	105.0	63.6	10,200	110.0	61.9	9,230	110.0	64.8	9,720	115.0	62.3	8,610	115.0	65.8	8,680*	115.0	64.0	8,730	115.0	68.2	7,050*
110.0	59.7	9,060	110.0	61.9	9,390	115.0	60.3	8,480	115.0	63.1	8,920	120.0	60.8	7,980	120.0	64.3	8,500	120.0	62.6	8,090	120.0	66.7	6,900*
115.0	57.9	8,310	115.0	60.1	8,610	120.0	58.7	7,840	120.0	61.5	8,240	125.0	59.3	7,400	125.0	62.7	7,890	125.0	61.1	7,490	125.0	65.2	6,740*
120.0	56.2	7,670	120.0	58.3	7,980	125.0	57.0	7,270	125.0	59.8	7,640	130.0	57.7	6,850	130.0	61.1	7,310	130.0	59.7	6,940	130.0	63.7	6,590*
125.0	54.4	7,090	125.0	56.5	7,360	130.0	55.4	6,720	130.0	58.1	7,070	135.0	56.1	6,340	135.0	59.5	6,760	135.0	58.2	6,450	135.0	62.2	6,450*
130.0	52.6	6,560	130.0	54.7	6,810	135.0	53.7	6,230	135.0	56.3	6,540	140.0	54.4	5,860	140.0	57.7	6,260	140.0	56.6	5,950	140.0	60.5	6,300*
135.0	50.8	6,080	135.0	52.8	6,300	140.0	51.8	5,750	140.0	54.4	6,040	145.0	52.8	5,440	145.0	56.0	5,790	145.0	55.1	5,530	145.0	58.9	5,970
140.0	48.8	5,590				145.0	50.1	5,290*	145.0	52.6	5,590	150.0	51.1	4,960*	150.0	54.2	5,370	150.0	53.5	5,070*	150.0	57.3	5,550
145.0	46.8	5,040*				150.0	48.2	4,780*				155.0	49.3	4,490*				155.0	51.9	4,620*	155.0	55.6	5,150
150.0	44.8	4,540*				155.0	46.3	4,320*				160.0	47.4	4,030*				160.0	50.1	4,160*	160.0	53.8	4,670*
155.0	42.7	4,030*				160.0	44.2	3,810*				165.0	45.6	3,610*				165.0	48.5	3,760*	165.0	52.0	4,250*
160.0	40.4	3,520*				165.0	42.2	3,370*				170.0	43.7	3,190*				170.0	46.7	3,370*			
165.0	38.1	3,040*																					

CK1100G SPECIFICATIONS

Fixed Jib Lift Capacity

Full Counterweight: 69,000 lbs

Carbody Weight: 31,800

180° Boom																							
30 ft Jib						40 ft Jib						50 ft Jib						60 ft Jib					
O set Angle (deg.)						O set Angle (deg.)						O set Angle (deg.)						O set Angle (deg.)					
10			30			10			30			10			30			10			30		
Load Radius (ft)	Boom Angle (deg.)	Rated Load (lbs)	Load Radius (ft)	Boom Angle (deg.)	Rated Load (lbs)	Load Radius (ft)	Boom Angle (deg.)	Rated Load (lbs)	Load Radius (ft)	Boom Angle (deg.)	Rated Load (lbs)	Load Radius (ft)	Boom Angle (deg.)	Rated Load (lbs)	Load Radius (ft)	Boom Angle (deg.)	Rated Load (lbs)	Load Radius (ft)	Boom Angle (deg.)	Rated Load (lbs)			
50.0	78.9	22,200*				55.0	78.7	21,670*				55.0	79.7	20,000*				60.0	79.3	18,000*			
55.0	77.4	21,750*	55.0	79.9	21,000*	60.0	77.3	21,270*				60.0	78.4	20,000*				65.0	78.0	18,000*			
60.0	76.0	21,360*	60.0	78.5	20,870*	65.0	76.0	20,870*	65.0	79.1	14,940*	65.0	77.1	20,000*				70.0	76.8	18,000*			
65.0	74.6	20,700	65.0	77.1	20,500*	70.0	74.7	18,840	70.0	77.7	14,480*	70.0	75.9	19,060	70.0	79.6	11,300*	75.0	75.5	17,230	75.0	79.9	8,990*
70.0	73.2	18,560	70.0	75.6	19,310	75.0	73.2	16,880	75.0	76.3	14,020*	75.0	74.5	17,100	75.0	78.2	10,930*	80.0	74.3	15,650	80.0	78.6	8,700*
75.0	71.7	16,600	75.0	74.1	17,300	80.0	71.9	15,290	80.0	74.9	13,620*	80.0	73.2	15,490	80.0	76.9	10,600*	85.0	73.0	14,240	85.0	77.3	8,460*
80.0	70.3	15,030	80.0	72.6	15,670	85.0	70.5	13,910	85.0	73.5	13,240*	85.0	71.9	14,100	85.0	75.5	10,310*	90.0	71.8	13,020	90.0	76.0	8,200*
85.0	68.8	13,660	85.0	71.2	14,240	90.0	69.1	12,690	90.0	72.1	12,890*	90.0	70.6	12,890	90.0	74.2	10,030*	95.0	70.4	11,860	95.0	74.6	7,950*
90.0	67.4	12,470	90.0	69.7	13,000	95.0	67.6	11,550	95.0	70.5	12,210	95.0	69.2	11,720	95.0	72.7	9,740*	100.0	69.2	10,890	100.0	73.3	7,760*
95.0	65.8	11,330	95.0	68.1	11,810	100.0	66.2	10,600	100.0	69.1	11,190	100.0	67.8	10,750	100.0	71.4	9,500*	105.0	67.9	10,000	105.0	72.0	7,530*
100.0	64.3	10,380	100.0	66.5	10,820	105.0	64.8	9,740	105.0	67.6	10,290	105.0	66.5	9,890	105.0	70.0	9,280*	110.0	66.6	9,230	110.0	70.7	7,360*
105.0	62.8	9,540	105.0	65.0	9,940	110.0	63.3	8,970	110.0	66.1	9,470	110.0	65.1	9,100	110.0	68.5	9,060*	115.0	65.2	8,460	115.0	69.2	7,160*
110.0	61.3	8,770	110.0	63.4	9,140	115.0	61.8	8,200	115.0	64.5	8,680	115.0	63.6	8,350	115.0	67.0	8,840*	120.0	63.8	7,820	120.0	67.8	7,010*
115.0	59.6	8,020	115.0	61.7	8,370	120.0	60.3	7,560	120.0	63.0	8,000	120.0	62.2	7,710	120.0	65.6	8,280	125.0	62.5	7,230	125.0	66.4	6,850*
120.0	58.0	7,380	120.0	60.1	7,710	125.0	58.8	6,980	125.0	61.4	7,380	125.0	60.8	7,120	125.0	64.1	7,640	130.0	61.1	6,670	130.0	65.0	6,700*
125.0	56.4	6,810	125.0	58.4	7,090	130.0	57.2	6,430	130.0	59.8	6,830	130.0	59.3	6,560	130.0	62.6	7,070	135.0	59.7	6,150*	135.0	63.6	6,540*
130.0	54.7	6,280	130.0	56.8	6,540	135.0	55.6	5,950	135.0	58.2	6,300	135.0	57.8	6,080	135.0	61.1	6,540	140.0	58.2	5,590*	140.0	62.0	6,210
135.0	53.0	5,770*	135.0	55.0	6,040	140.0	53.9	5,370*	140.0	56.4	5,770	140.0	56.2	5,510*	140.0	59.4	6,010	145.0	56.8	5,110*	145.0	60.5	5,700*
140.0	51.2	5,180*	140.0	53.1	5,480*	145.0	52.3	4,870*	145.0	54.7	5,260*	145.0	54.7	5,020*	145.0	57.8	5,510*	150.0	55.3	4,620*	150.0	59.0	5,220*
145.0	49.4	4,650*	145.0	51.3	4,960*	150.0	50.6	4,380*	150.0	53.0	4,760*	150.0	53.1	4,540*	150.0	56.2	5,020*	155.0	53.8	4,210*	155.0	57.5	4,760*
150.0	47.6	4,160*				155.0	48.8	3,920*				155.0	51.5	4,100*	155.0	54.5	4,560*	160.0	52.2	3,760*	160.0	55.8	4,290*
155.0	45.7	3,680*				160.0	46.9	3,460*				160.0	49.8	3,630*	160.0	52.7	4,070*	165.0	50.6	3,370*	165.0	54.1	3,880*
160.0	43.6	3,210*				165.0	45.1	3,040*				165.0	48.1	3,240*				170.0	52.4		170.0	52.4	3,480*
Reeves	1		Reeves	1		Reeves	1		Reeves	1		Reeves	1		Reeves	1		Reeves	1		Reeves	1	

190° Boom																							
30 ft Jib						40 ft Jib						50 ft Jib						60 ft Jib					
O set Angle (deg.)						O set Angle (deg.)						O set Angle (deg.)						O set Angle (deg.)					
10			30			10			30			10			30			10			30		
Load Radius (ft)	Boom Angle (deg.)	Rated Load (lbs)	Load Radius (ft)	Boom Angle (deg.)	Rated Load (lbs)	Load Radius (ft)	Boom Angle (deg.)	Rated Load (lbs)	Load Radius (ft)	Boom Angle (deg.)	Rated Load (lbs)	Load Radius (ft)	Boom Angle (deg.)	Rated Load (lbs)	Load Radius (ft)	Boom Angle (deg.)	Rated Load (lbs)	Load Radius (ft)	Boom Angle (deg.)	Rated Load (lbs)			
50.0	79.4	19,440*				55.0	79.2	18,950*				60.0	78.9	18,470*				60.0	79.7	18,000*			
55.0	78.0	19,020*				60.0	77.9	18,560*				65.0	77.7	18,070*				65.0	78.5	17,960*			
60.0	76.7	18,620*	60.0	79.0	18,250*	65.0	76.6	18,160*	65.0	79.6	15,100*	65.0	76.5	17,700*				70.0	77.4	17,590*			
65.0	75.4	18,250*	65.0	77.7	17,870*	70.0	75.4	17,810*	70.0	78.3	14,660*	70.0	75.2	16,930	70.0	78.7	11,040*	75.0	76.1	17,080			
70.0	74.0	17,870*	70.0	76.3	17,520*	75.0	74.0	16,710	75.0	76.9	14,190*	75.0	73.9	15,320	75.0	77.5	10,730*	80.0	74.9	15,470	80.0	79.1	8,790*
75.0	72.6	16,420	75.0	74.9	17,150	80.0	72.7	15,120	80.0	75.6	13,800*	80.0	72.7	13,930	80.0	76.2	10,420*	85.0	73.8	14,060	85.0	77.9	8,550*
80.0	71.2	14,850	80.0	73.5	15,520	85.0	71.4	13,730	85.0	74.3	13,420*	85.0	71.4	12,690	85.0	74.9	10,160*	90.0	72.6	12,830	90.0	76.6	8,310*
85.0	69.9	13,490	85.0	72.1	14,080	90.0	70.1	12,520	90.0	72.9	13,090*	90.0	70.1	11,550	90.0	73.5	9,870*	95.0	71.3	11,680	95.0	75.3	8,060*
90.0	68.5	12,270	90.0	70.7	12,850	95.0	68.7	11,370	95.0	71.5	12,050	100.0	68.8	10,580	100.0	72.2	9,630*	100.0	70.1	10,710	100.0	74.1	7,840*
95.0	67.0	11,150	95.0	69.2	11,660	100.0	67.3	10,420	100.0	70.1	11,040	105.0	67.5	9,720	105.0	70.9	9,410*	105.0	68.8	9,830	105.0	72.8	7,640*
100.0	65.6	10,200	100.0	67.7	10,670	105.0	66.0	9,540	105.0	68.7	10,140	110.0	66.2	8,920	110.0	69.6	9,190*	110.0	67.6	9,030	110.0	71.5	7,450*
105.0	64.1	9,340	105.0	66.3	9,780	110.0	64.6	8,770	110.0	67.3	9,320	115.0	64.8	8,170	115.0	68.1	8,810	115.0	66.3	8,260*	115.0	70.2	7,270*
110.0	62.7	8,570	110.0	64.8	8,970	115.0	63.1	8,020	115.0	65.8	8,530	120.0	63.5	7,510	120.0	66.7	8,130	120.0	65.0	7,580*	120.0	68.9	7,090*
115.0	61.1	7,840	115.0	63.2	8,200	120.0	61.7	7,380	120.0	64.3	7,840	125.0	62.1	6,900*	125.0	65.3	7,490	125.0	63.7	6,940*	125.0	67.5	6,940*
120.0	59.6	7,200	120.0	61.7	7,530	125.0	60.3	6,790	125.0	62.9	7,230	130.0	60.8	6,300*	130.0	63.9	6,870*	130.0	62.4	6,370*	130.0	66.2	6,790*
125.0	58.1	6,630	125.0	60.1	6,940	130.0	58.8	6,190*	130.0	61.4	6,650	135.0	59.4	5,750*	135.0	62.5	6,300*	135.0	61.1	5,820*	135.0	64.8	6,480*
130.0	56.6	6,040*	130.0	58.5	6,370	135.0	57.4	5,640*	135.0	59.9	6,080*	140.0	57.9	5,200*	140.0	60.9	5,730*	140.0	59.7	5,260*	140.0	63.4	5,900*
135.0	55.0	5,460*	135.0	56.9	5,790*	140.0	55.8	5,070*	140.0	58.2	5,510*	145.0	56.4	4,710*	145.0	59.5	5,220*	145.0	58.3	4,780*	145.0	62.0	5,400*
140.0	53.3	4,890*	140.0	55.2	5,220*	145.0	54.2	4,580*	145.0	56.6	4,980*	150.0	55.0	4,250*	150.0	57.9	4,730*	150.0	56.9	4,340*	150.0	60.5	4,930*
145.0	51.6	4,380*	145.0	53.5	4,690*	150.0	52.7	4,120*	150.0	55.0	4,490*	155.0	53.5	3,810*	155.0	56.4	4,290*	155.0	55.5	3,900*	155.0	59.1	4,470*
150.0	50.0	3,920*	150.0	51.8	4,210*	155.0	51.0	3,680*	155.0	53.4	4,030*	160.0	51.8	3,370*				160.0	54.7	3,830*	160.0	57.5	4,030*
155.0	48.2	3,460*				160.0	49.3	3,210*				165.0	51.8		165.0	53.1	3,410*	165.0	52.6	3,080*	165.0	56.0	3,610*
Reeves	1		Reeves	1		Reeves	1		Reeves	1		Reeves	1		Reeves	1		Reeves	1		Reeves	1	

Note: Designed and rated to comply with ANSI Code B30.5

Capacities based on factors other than machine stability such as structural competence are shown by asterisk * in the charts.

Refer to notes on page 20.

CK1100G SPECIFICATIONS

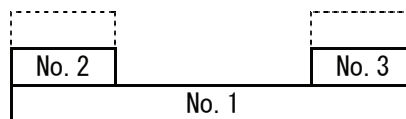
Supplemental Data - Clamshell

1. Rated loads included in the charts are the maximum allowable freely suspended loads at a given boom length, boom angle and load radius, and have been determined for the machine standing level on firm supporting surface under ideal operating conditions. The user must limit or de-rate rated loads to allow for adverse conditions (such as soft or uneven ground, out-of-level conditions, wind, side loads, pendulum action, jerking or sudden stopping of loads, inexperience of personnel, multiple machine lifts, and traveling with a load).
2. Rated loads do not exceed 66% of minimum tipping loads. Rated loads based on factors other than machine stability such as structural competence are shown by asterisk * in the charts.
3. The machine must be reeved and set-up as stated in the operation manual and all the instruction manuals if these manuals are missing, obtain replacements.
 - Machine shall be positively secured to prevent shifting.
 - Boom backstops are required for all boom length.
 - Gantry must be fully raised position for all operations.
 - Crawlers must be fully extended and be locked in position.
 - Must have 43,600 lbs (2) Counterweights installed, and without carbody weights.
4. Do not attempt to lift where no radius on load is listed as crane may tip or collapse.
5. Attempting to lift more than rated loads may cause machine to tip or collapse. Do not tip machine to determine rated loads.
6. Weight of hooks, hook blocks, slings and other lifting devices are a part of the total load. Their total weight must be subtracted from the rated load to obtain the weight that can be lifted.
7. The boom should be erected over the front of the crawlers, not laterally.
8. Least stable position is over the side.
9. Maximum hoist load for number of reeving parts of line for hoist rope.

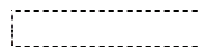
Maximum Load for Main Boom

No. of Parts of line	1
Maximum Loads (lbs)	22,000

10. Rated loads listed apply only to the machine as originally manufactured and designed by KOBELCO CRANES CO., LTD. Modifications to this machine or use of equipment other than that specified can reduce operating capacity.
11. Assembling the Counterweight
43,600 lbs counterweight (No. 1 ~ No. 3)
Without Carbody weights



Counterweights



Carbody
Weights

Operation of this equipment in excess of rated loads or disregard of instruction voids the warranty.

CK1100G SPECIFICATIONS

Clamshell

Boom:

Welded lattice construction using tubular, high-tensile steel chords with pin connections between each section.

Basic boom length: 40 ft (12.2 m)

Max. boom length: 120 ft (36.6 m)

Limit on clamshell bucket weight: 4,600 lbs (2,100 kg)

Optional tagline: Hydraulic operated type and spring type.

Boom Component Chart:

Boom length ft (m)	Boom arrangement
40 (12.2)	Base-Tip
50 (15.2)	Base-A-Tip
60 (18.3)	Base-A-A-Tip, Base-B-Tip
70 (21.3)	Base-A-B-Tip
80 (24.4)	Base-A-A-B-Tip, Base-B-B-Tip
90 (27.4)	Base-A-C-Tip
100 (30.5)	Base-A-A-B-B-Tip, Base-A-A-C-Tip
110 (33.5)	Base-A-B-C-Tip
120 (36.6)	Base-A-A-B-C-Tip, Base-B-B-C-Tip

Base = Boom Base

Insert: A = 10 ft (3.05 m)

B = 20 ft (6.10 m)

C = 40 ft (12.2 m)

Tip = Boom Tip

1. Figures represent maximum allowable capacity, and assume level, ground and ideal working conditions.
2. Capacities are calculated at 66% of the minimum tipping loads.
3. Capacities are maximum recommended by PCSA Standard #4. Allowances must be made by the user for such unfavorable conditions as a sort of uneven supporting surface, rapid cycle operations, or bucket.
4. The combined weight of the bucket and load must not exceed these capacities.

3 Counterweights (43,600 lbs) - Without Carbody weights - Crawlers in extended position.

40' Boom			50' Boom			60' Boom		
Load Radius (ft)	Boom Angle (deg.)	360° Rated Load (lbs)	Load Radius (ft)	Boom Angle (deg.)	360° Rated Load (lbs)	Load Radius (ft)	Boom Angle (deg.)	360° Rated Load (lbs)
22.0	63.7	22,000 *	26.0	64.3	22,000 *	30.0	64.6	22,000 *
24.0	60.5	22,000 *	28.0	61.7	22,000 *	32.0	62.5	22,000 *
26.0	57.1	22,000 *	30.0	59.0	22,000 *	34.0	60.3	21,400 *
28.0	53.5	22,000 *	32.0	56.3	22,000 *	36.0	58.1	20,200 *
30.0	49.8	22,000 *	34.0	53.5	21,400 *	38.0	55.8	19,200 *
32.0	45.9	22,000 *	36.0	50.5	20,200 *	40.0	53.4	18,200 *
34.0	41.7	21,400 *	38.0	47.4	19,200 *	42.0	51.0	17,300 *
36.0	37.0	20,200 *	40.0	44.2	18,200 *	44.0	48.4	16,500 *
38.0	31.8	19,200 *	42.0	40.7	17,300 *	46.0	45.8	15,800 *
40.0	25.7	18,200 *	44.0	37.0	16,500 *	48.0	43.0	15,200 *
			46.0	32.9	15,800 *	50.0	40.1	14,600 *
			48.0	28.3	15,200 *	52.0	37.0	14,000 *
						54.0	33.6	13,500 *
						56.0	29.9	13,000 *
						58.0	25.7	12,500 *

Refer to notes on page 29.



CK1100G SPECIFICATIONS

Clamshell

3 Counterweights (43,600 lbs) - Without Carbody weights - Crawlers in extended position.

70' Boom			80' Boom			90' Boom		
Load Radius (ft)	Boom Angle (deg.)	360° Rated Load (lbs)	Load Radius (ft)	Boom Angle (deg.)	360° Rated Load (lbs)	Load Radius (ft)	Boom Angle (deg.)	360° Rated Load (lbs)
34.0	64.9	21,400 *	38.0	65.1	19,200 *	42.0	65.2	17,300 *
36.0	63.1	20,200 *	40.0	63.5	18,200 *	44.0	63.8	16,500 *
38.0	61.2	19,200 *	42.0	61.9	17,300 *	46.0	62.4	15,800 *
40.0	59.3	18,200 *	44.0	60.2	16,500 *	48.0	60.9	15,200 *
42.0	57.4	17,300 *	46.0	58.6	15,800 *	50.0	59.5	14,600 *
44.0	55.4	16,500 *	48.0	56.9	15,200 *	52.0	58.0	14,000 *
46.0	53.4	15,800 *	50.0	55.1	14,600 *	54.0	56.4	13,500 *
48.0	51.3	15,200 *	52.0	53.3	14,000 *	56.0	54.9	13,000 *
50.0	49.1	14,600 *	54.0	51.5	13,500 *	58.0	53.3	12,500 *
52.0	46.9	14,000 *	56.0	49.6	13,000 *	60.0	51.7	12,100 *
54.0	44.6	13,500 *	58.0	47.7	12,500 *	62.0	50.0	11,700 *
56.0	42.2	13,000 *	60.0	45.7	12,100 *	64.0	48.3	11,400 *
58.0	39.6	12,500 *	62.0	43.7	11,700 *	66.0	46.6	11,000 *
60.0	37.0	12,100 *	64.0	41.5	11,400 *	68.0	44.8	10,700 *
62.0	34.1	11,700 *	66.0	39.3	11,000 *	70.0	43.0	10,400 *
64.0	31.0	11,400 *	68.0	37.0	10,700 *	72.0	41.0	10,100 *
66.0	27.6	11,000 *	70.0	34.5	10,400 *	74.0	39.0	9,700
			72.0	31.8	10,100 *	76.0	36.9	9,200
			74.0	28.9	9,800 *	78.0	34.7	9,000
			76.0	25.7	9,400 *	80.0	32.4	8,500
						82.0	29.9	8,300
						84.0	27.2	7,900
100' Boom			110' Boom			120' Boom		
Load Radius (ft)	Boom Angle (deg.)	360° Rated Load (lbs)	Load Radius (ft)	Boom Angle (deg.)	360° Rated Load (lbs)	Load Radius (ft)	Boom Angle (deg.)	360° Rated Load (lbs)
46.0	65.4	15,800 *	56.0	62.0	11,900 *	56.0	64.5	11,400 *
48.0	64.1	15,200 *	58.0	60.8	11,700 *	58.0	63.4	11,300 *
50.0	62.8	14,600 *	60.0	59.6	11,600 *	60.0	62.3	11,200 *
52.0	61.5	14,000 *	62.0	58.3	11,300 *	62.0	61.3	11,000 *
54.0	60.2	13,500 *	64.0	57.1	11,100 *	64.0	60.2	10,800 *
56.0	58.8	13,000 *	66.0	55.8	10,800 *	66.0	59.0	10,600 *
58.0	57.5	12,500 *	68.0	54.6	10,400 *	68.0	57.9	10,200 *
60.0	56.1	12,100 *	70.0	53.3	10,100	70.0	56.8	9,900
62.0	54.7	11,700 *	72.0	52.0	9,700	72.0	55.6	9,500
64.0	53.3	11,400 *	74.0	50.6	9,300	74.0	54.5	9,100
66.0	51.8	11,000 *	76.0	49.2	8,900	76.0	53.3	8,800
68.0	50.4	10,700 *	78.0	47.8	8,500	78.0	52.1	8,400
70.0	48.8	10,300	80.0	46.4	8,200	80.0	50.8	8,100
72.0	47.3	9,900	82.0	45.0	7,900	82.0	49.6	7,700
74.0	45.7	9,400	84.0	43.4	7,500	84.0	48.3	7,400
76.0	44.1	9,000	86.0	41.9	7,200	86.0	47.0	7,100
78.0	42.4	8,800	88.0	40.3	7,000	88.0	45.7	6,800
80.0	40.6	8,300	90.0	38.6	6,800	90.0	44.3	6,600
82.0	38.8	8,100	92.0	36.9	6,600	92.0	42.9	6,400
84.0	36.9	7,700	94.0	35.1	6,400	94.0	41.5	6,200
86.0	35.0	7,400	96.0	33.3	6,200	96.0	40.0	6,000
88.0	32.9	7,200	98.0	31.3	5,900	98.0	38.5	5,700
90.0	30.7	7,000	100.0	29.2	5,700	100.0	36.9	5,500
92.0	28.3	6,800	102.0	27.0	5,500	102.0	35.3	5,300
94.0	25.8	6,600	104.0	24.5	5,300	104.0	33.6	5,100
						106.0	31.8	5,000

Refer to notes on page 29.



CK1100G SPECIFICATIONS

Supplemental Data - Barge

1. Rated loads included in the charts are the maximum allowable freely suspended loads at a given boom length, boom angle and load radius, and have been determined for the machine standing level on firm supporting surface under ideal operating conditions. The user must limit or de-rate rated loads to allow for adverse conditions (such as soft or uneven ground, out-of-level conditions, wind, side loads, pendulum action, jerking or sudden stopping of loads, inexperience of personnel, multiple machine lifts, and traveling with a load).
2. Rated loads do not exceed 75% of minimum tipping loads. Rated loads based on factors other than machine stability such as structural competence are shown by asterisk * in the charts.
3. The machine must be reeved and set-up as stated in the operation manual and all the instruction manuals if these manuals are missing, obtain replacements.
 - Machine shall be positively secured to prevent shifting.
 - Boom backstops are required for all boom length.
 - Gantry must be fully raised position for all operations.
 - Crawlers must be fully extended and be locked in position.
 - Must have 69,000 lbs (5) Counterweights fully installed.
 - Must have 31,700 lbs (2) Carbody weights fully installed.
4. Do not attempt to lift where no radius on load is listed as crane may tip or collapse.
5. Attempting to lift more than rated loads may cause machine to tip or collapse. Do not tip machine to determine rated loads.
6. Weight of hooks, hook blocks, slings and other lifting devices are a part of the total load. Their total weight must be subtracted from the rated load to obtain the weight that can be lifted.
7. When lifting over boom point with jib or auxiliary sheave, rated loads for the boom must be deducted as shown below.

Jib Length	Aux Sheave	30 ft	40 ft	50 ft	60 ft
Deduct (lbs)	430	Not Applicable			

When auxiliary sheave is used for 8 or 7 reeving parts of line, it is not required to deduct 430 lbs from rated loads.

8. To install the jib is prohibited when the machine is on a barge.
9. The total load that can be lifted over an auxiliary sheave is the value for 430 lbs deducted from rated load for the boom without auxiliary sheave, but it should not exceed 24,000 lbs.

10. Boom lengths that can attach auxiliary sheave are from 40 ft (12.2 m) to 190 ft (57.9 m).
11. The boom should be erected over the front of the crawlers, not laterally.
12. Least stable position is over the side.
13. Maximum hoist load for number of reeving parts of line for hoist rope.

Maximum Load for Main Boom

No. of Parts of line	1	2	3	4	5
Maximum Loads (lbs)	25,200	50,400	75,600	100,800	126,000

No. of Parts of line	6	7	8
Maximum Loads (lbs)	151,200	176,400	220,000

Maximum Load for Auxiliary Sheave

No. of Parts of line	1
Maximum Loads (lbs)	24,000

14. Weight of recommended hook block.

Hook Block	110 t	77 t	55 t	39 t	12 t ball hook
Weight (lbs)	3,815	1,990	1,875	1,545	660

Warning: If the weight of the hook block to be used is light than the recommended weight, the jib may turn over back or will be difficult to lower the empty hook block.

15. Rated loads listed apply only to the machine as originally manufactured and designed by KOBELCO CRANES CO., LTD. Modifications to this machine or use of equipment other than that specified can reduce operating capacity.
16. Designed and rated to comply with ANSI Code B30.5.



CK1100G SPECIFICATIONS

Barge

5 Counterweights (69,000 lbs) - 2 Carbody weights (31,800 lbs) - Crawlers in extended position.

40' Boom						50' Boom						60' Boom					
360° Rated Load (lbs)						360° Rated Load (lbs)						360° Rated Load (lbs)					
Load Radius (ft)	Boom Angle (deg.)	0 Degree Machine List	1 Degree Machine List	2 Degree Machine List	2 Degree Machine List	Load Radius (ft)	Boom Angle (deg.)	0 Degree Machine List	1 Degree Machine List	2 Degree Machine List	2 Degree Machine List	Load Radius (ft)	Boom Angle (deg.)	0 Degree Machine List	1 Degree Machine List	2 Degree Machine List	2 Degree Machine List
11.0	80.5	220,000*				12.0	81.2	213,200*				13.0	81.7	200,400*			
12.0	79.0	213,300*				13.0	80.0	200,600*				14.0	80.7	187,400*			
13.0	77.5	200,800*				14.0	78.9	187,800*				15.0	79.8	175,200*			
14.0	76.0	188,100*				15.0	77.7	175,600*				16.0	78.8	164,800*			
15.0	74.6	175,900*	175,900*			16.0	76.6	165,300*				17.0	77.8	155,500*			
16.0	73.1	165,500*	165,500*			17.0	75.4	156,000*				18.0	76.8	146,900*			
17.0	71.6	156,300*	156,300*	127,700*		18.0	74.2	147,400*	143,200*			19.0	75.9	139,800*	123,900*		
18.0	70.1	147,800*	146,400*	126,100*		19.0	72.9	140,100*	132,200*			20.0	74.9	132,200*	118,100*		
19.0	68.5	140,500*	134,600*	122,400*		20.0	71.7	132,400*	122,900*			22.0	72.9	115,100*	105,300*		
20.0	66.9	132,800*	124,900*	116,500*	100,300*	22.0	69.3	115,300*	106,800*	98,500*		24.0	70.9	100,800*	93,000*	81,600*	
22.0	63.7	115,600*	108,300*	103,400*	97,800*	24.0	66.8	101,000*	94,400*	89,500*	77,800*	26.0	68.8	89,100*	83,200*	78,700*	
24.0	60.4	101,300*	95,600*	92,000*	88,400*	26.0	64.3	89,400*	84,500*	80,700*	75,600*	28.0	66.7	80,500*	75,300*	71,600*	63,000*
26.0	57.0	89,600*	85,600*	82,700*	79,900*	28.0	61.7	80,700*	76,400*	73,400*	70,700*	30.0	64.6	72,800*	68,700*	65,700*	61,500*
28.0	53.4	80,900*	77,400*	75,100*	72,900*	30.0	59.1	73,000*	69,700*	67,200*	64,900*	32.0	62.5	66,600*	63,200*	60,600*	58,400*
30.0	49.8	73,300*	70,600*	68,700*	67,000*	32.0	56.3	67,000*	63,900*	61,900*	60,000*	34.0	60.3	61,600*	58,400*	56,200*	54,400*
32.0	45.8	67,200*	64,800*	63,400*	62,000*	34.0	53.4	62,000*	59,100*	57,400*	55,900*	36.0	58.0	57,300*	54,200*	52,400*	50,800*
34.0	41.2	61,700*	60,000*	58,900*	57,800*	36.0	50.3	57,800*	55,000*	53,600*	52,300*	38.0	55.7	53,100*	50,600*	49,100*	47,700*
36.0	36.2	56,600*	55,700*	54,700*	53,700*	38.0	47.3	53,600*	51,400*	50,100*	49,000*	40.0	53.4	49,300*	47,500*	46,100*	44,900*
38.0	31.1	51,500*	51,000*	49,700*	48,400*	40.0	44.0	49,800*	48,100*	47,200*	46,300*	42.0	50.9	46,600*	44,600*	43,500*	42,400*
40.0	25.4	45,900*	44,800*	43,600*	42,500*	42.0	40.4	47,000*	45,400*	44,600*	43,800*	44.0	48.3	43,800*	42,100*	41,100*	40,200*
						44.0	36.7	44,300*	42,900*	42,200*	41,500*	46.0	45.8	41,100*	39,800*	38,900*	38,100*
						46.0	62.9	41,500*	40,600*	40,000*	39,500*	48.0	42.8	39,200*	37,700*	37,000*	36,300*
						48.0	27.6	38,300*	38,200*	37,400*	36,700*	50.0	39.9	37,200*	35,900*	35,300*	34,800*
						50.0	22.3	35,100*	34,800*	33,900*	33,900*	55.0	31.2	32,900*	31,900*	31,500*	31,100*
												60.0	20.7	28,600*			
Reeves		8	7	6	4	Reeves		8	6	4	4	Reeves		8	5	4	4
70' Boom						80' Boom						90' Boom					
360° Rated Load (lbs)						360° Rated Load (lbs)						360° Rated Load (lbs)					
Load Radius (ft)	Boom Angle (deg.)	0 Degree Machine List	1 Degree Machine List	2 Degree Machine List	2 Degree Machine List	Load Radius (ft)	Boom Angle (deg.)	0 Degree Machine List	1 Degree Machine List	2 Degree Machine List	2 Degree Machine List	Load Radius (ft)	Boom Angle (deg.)	0 Degree Machine List	1 Degree Machine List	2 Degree Machine List	2 Degree Machine List
15.0	81.3	151,000*				16.0	81.6	151,000*				17.0	81.9	125,800*			
16.0	80.4	151,000*				17.0	80.9	149,300*				18.0	81.3	125,800*			
17.0	79.6	149,400*				18.0	80.2	146,500*				19.0	80.7	125,800*			
18.0	78.7	146,700*				19.0	79.5	139,400*				20.0	80.0	124,000*			
19.0	77.9	139,800*				20.0	78.8	131,800*				22.0	78.7	112,500*			
20.0	77.1	132,200*				22.0	77.3	115,100*				24.0	77.4	100,800*			
22.0	75.4	115,400*				24.0	75.8	101,000*				26.0	76.1	89,100*			
24.0	73.7	101,300*	92,400*			26.0	74.3	89,200*	81,800*			28.0	74.8	80,500*	73,000*		
26.0	72.0	89,600*	82,800*	68,700*		28.0	72.8	80,500*	74,100*			30.0	73.5	72,800*	66,900*		
28.0	70.3	80,800*	75,000*	67,400*		30.0	71.2	72,800*	67,700*	58,100*		32.0	72.1	66,600*	61,600*	50,600*	
30.0	68.5	73,000*	68,500*	65,000*	53,600*	32.0	69.7	66,600*	62,200*	57,100*	46,400*	34.0	70.8	61,600*	56,900*	49,600*	
32.0	66.7	67,000*	63,000*	60,100*	51,800*	34.0	68.2	61,600*	57,500*	54,700*	44,700*	36.0	69.4	57,300*	53,000*	49,000*	39,900*
34.0	64.9	62,000*	58,300*	55,700*	49,900*	36.0	66.6	57,300*	53,500*	51,000*	43,300*	38.0	68.0	53,100*	49,500*	47,000*	38,500*
36.0	63.0	57,800*	54,200*	52,100*	47,900*	38.0	65.1	53,100*	50,000*	47,800*	41,800*	40.0	66.6	49,300*	46,300*	44,200*	37,600*
38.0	61.2	53,600*	50,600*	48,700*	45,800*	40.0	63.5	49,300*	46,800*	45,000*	40,400*	42.0	65.2	46,500*	43,600*	41,700*	36,400*
40.0	59.3	49,800*	47,400*	45,700*	43,800*	42.0	61.8	46,600*	44,100*	42,400*	39,000*	44.0	63.8	43,700*	41,100*	39,500*	35,400*
42.0	57.3	46,900*	44,600*	43,100*	41,500*	44.0	60.2	43,800*	41,600*	40,100*	37,700*	46.0	62.4	40,900*	38,900*	37,400*	34,300*
44.0	55.3	44,100*	42,100*	40,800*	39,700*	46.0	58.5	41,100*	39,300*	38,000*	36,200*	48.0	60.9	38,900*	36,900*	35,600*	33,200*
46.0	53.3	41,300*	39,800*	38,700*	37,700*	48.0	56.8	39,100*	37,300*	36,200*	34,800*	50.0	59.4	36,900*	35,100*	34,000*	32,000*
48.0	51.2	39,400*	37,700*	36,700*	35,900*	50.0	55.1	37,100*	35,500*	34,500*	33,600*	55.0	55.7	32,500*	31,200*	30,300*	29,200*
50.0	49.0	37,400*	35,900*	35,100*	34,300*	55.0	50.5	32,700*	31,500*	30,800*	30,000*	60.0	51.7	29,000*	28,100*	27,400*	26,600*
55.0	43.2	33,200*	32,000*	31,400*	30,800*	60.0	45.7	29,200*	28,300*	27,700*	27,200*	65.0	47.4	26,100*	25,400*	24,800*	24,200*
60.0	36.9	29,600*	28,800*	28,400*	28,100*	65.0	40.4	26,300*	25,700*	25,300*	24,800*	70.0	42.9	23,800*	23,100*	22,700*	22,200*
65.0	29.2	26,800*	26,300*	26,000*	25,800*	70.0	34.3	24,100*	23,400*	23,100*	22,800*	75.0	37.9	21,800*	21,200*	20,800*	20,500*
						75.0	26.9	22,100*	21,500*	21,300*	21,100*	80.0	32.2	20,100*	19,600*	19,300*	19,100*
												85.0	25.7	18,600*	18,300*	18,100*	17,900*
Reeves		6	4	4	4	Reeves		6	4	4	2	Reeves		5	4	4	2

Refer to notes on page 32.

CK1100G SPECIFICATIONS

Barge

5 Counterweights (69,000 lbs) - 2 Carbody weights (31,800 lbs) - Crawlers in extended position.

100' Boom					110' Boom					120' Boom								
360° Rated Load (lbs)					360° Rated Load (lbs)					360° Rated Load (lbs)								
Load Radius (ft)	Boom Angle (deg.)	0 Degree Machine List	1 Degree Machine List	2 Degree Machine List	2 Degree Machine List	Load Radius (ft)	Boom Angle (deg.)	0 Degree Machine List	1 Degree Machine List	2 Degree Machine List	2 Degree Machine List	Load Radius (ft)	Boom Angle (deg.)	0 Degree Machine List	1 Degree Machine List	2 Degree Machine List	2 Degree Machine List	
19.0	81.6	125,600*				20.0	81.8	100,800*				22.0	81.6	98,700*				
20.0	81.0	123,600*				22.0	80.8	100,800*				24.0	80.6	94,200*				
22.0	79.9	112,200*				24.0	79.7	96,500*				26.0	79.6	88,000*				
24.0	78.7	100,600				26.0	78.6	88,500*				28.0	78.6	79,900				
26.0	77.5	88,900				28.0	77.6	80,200				30.0	77.7	72,200				
28.0	76.3	80,200				30.0	76.5	72,400				32.0	76.7	66,100				
30.0	75.1	72,400				32.0	75.4	66,300				34.0	75.7	61,100	53,000*			
32.0	74.0	66,300	60,800			34.0	74.3	61,300	55,900*			36.0	74.7	56,800	51,300			
34.0	72.8	61,300	56,300			36.0	73.2	57,000	51,900			38.0	73.7	52,500	47,900			
36.0	71.6	57,000	52,300	43,500*		38.0	72.2	52,700	48,600			40.0	72.7	48,700	45,000	33,900*		
38.0	70.3	52,700	48,900	42,900*		40.0	71.1	48,900	45,500	37,900*		42.0	71.7	45,800	42,200	33,400*		
40.0	69.1	48,900	45,800	42,400*	34,800*	42.0	70.0	46,200	42,900	37,500*		44.0	70.7	43,000	39,800	33,000*		
42.0	67.9	46,200	43,100	40,900*	33,500*	44.0	68.9	43,400	40,400	37,000*	28,900*	46.0	69.7	40,200	37,600	32,800*		
44.0	66.6	43,400	40,700	38,800	32,500*	46.0	67.8	40,700	38,200	36,200*	28,600*	48.0	68.6	38,300	35,600	32,300*		
46.0	65.4	40,700	38,500	36,800	31,700*	48.0	66.6	38,700	36,300	34,600	28,200*	50.0	67.6	36,300	34,000	31,700*	24,800*	
48.0	64.1	38,700	36,500	35,000	30,900*	50.0	65.4	36,600	34,500	32,900	27,900*	55.0	65.0	32,000	30,200	28,900	24,300*	
50.0	62.8	36,600	34,700	33,400	30,000*	55.0	62.5	32,300	30,500	29,400	27,200*	60.0	62.3	28,300	27,100	26,000	23,600*	
55.0	59.5	32,300	30,800	29,700	27,800*	60.0	59.5	28,700	27,400	26,400	25,500	65.0	59.6	25,400	24,400	23,500	22,700	
60.0	56.1	28,700	27,500	26,700	25,500	65.0	56.5	25,900	24,700	23,900	23,100	70.0	56.8	23,200	22,200	21,400	20,800	
65.0	52.5	25,900	24,900	24,300	23,600	70.0	53.2	23,500	22,500	21,800	21,200	75.0	53.8	21,200	20,300	19,700	19,100	
70.0	48.8	23,500	22,700	22,100	21,500	75.0	49.9	21,400	20,600	20,000	19,500	80.0	50.8	19,400	18,600	18,100	17,600	
75.0	44.8	21,400	20,700	20,300	20,000	80.0	46.4	19,600	19,000	18,600	18,200	85.0	47.7	17,700	17,200	16,700	16,300	
80.0	40.5	19,600	19,200	18,800	18,500	85.0	42.6	18,100	17,700	17,300	17,000	90.0	44.3	16,500	15,900	15,600	15,300	
85.0	36.0	18,100	17,700	17,500	17,200	90.0	38.6	16,800	16,400	16,100	15,700	95.0	40.7	15,300	14,800	14,500	14,300	
90.0	30.5	16,900	16,500	16,300	16,100	95.0	34.1	15,600	15,200	15,000	14,800	100.0	36.9	14,200	13,800	13,600	13,400	
95.0	24.0	15,800	15,400	15,300	15,100	100.0	29.1	14,600	14,300	14,200	14,000	110.0	27.8	12,600	12,200	12,000	11,900	
						105.0	23.2	13,770	13,500	13,300		115.0	22.2	11,840	11,500			
Reeves		5	4	2	2	Reeves		4	4	2	2	Reeves		4	4	2	2	
130' Boom					140' Boom					150' Boom								
360° Rated Load (lbs)					360° Rated Load (lbs)					360° Rated Load (lbs)								
Load Radius (ft)	Boom Angle (deg.)	0 Degree Machine List	1 Degree Machine List	2 Degree Machine List	2 Degree Machine List	Load Radius (ft)	Boom Angle (deg.)	0 Degree Machine List	1 Degree Machine List	2 Degree Machine List	2 Degree Machine List	Load Radius (ft)	Boom Angle (deg.)	0 Degree Machine List	1 Degree Machine List	2 Degree Machine List	2 Degree Machine List	
24.0	81.3	85,100*				24.0	81.9	72,900*				26.0	81.7	62,200*				
26.0	80.4	83,900*				26.0	81.1	71,800*				28.0	80.9	61,300*				
28.0	79.5	78,200*				28.0	80.3	70,800*				30.0	80.1	60,400*				
30.0	78.6	71,900				30.0	79.4	69,000*				32.0	79.4	59,400*				
32.0	77.7	65,900				32.0	78.6	64,700*				34.0	78.6	57,200*				
34.0	76.9	60,900				34.0	77.8	60,500				36.0	77.8	54,100*				
36.0	75.9	56,600				36.0	76.9	56,200				38.0	77.0	51,000*				
38.0	75.0	52,300	46,400*			38.0	76.1	52,000				40.0	76.3	48,000				
40.0	74.1	48,400	44,500			40.0	75.2	48,200	41,500*			42.0	75.5	45,200	37,100*			
42.0	73.2	45,600	41,700			42.0	74.4	45,400	40,600*			44.0	74.7	42,400	36,600*			
44.0	72.2	42,800	39,400	29,700*		44.0	73.5	42,600	38,900			46.0	73.9	39,600	35,800*			
46.0	71.3	40,000	37,200	29,400*		46.0	72.7	39,800	36,800			48.0	73.1	37,500	34,500			
48.0	70.4	38,000	35,300	29,100*		48.0	71.8	37,800	34,900			50.0	72.3	35,500	32,800	23,300*		
50.0	69.4	36,000	33,600	28,700*		50.0	71.0	35,800	33,200			55.0	70.3	31,200	29,000	22,700*		
55.0	67.1	31,600	29,700	27,900*	21,700*	55.0	68.8	31,400	29,400	25,100*	19,200*	60.0	68.2	27,600	25,800	22,000*	16,800*	
60.0	64.6	28,100	26,600	25,500	21,200*	60.0	66.6	27,800	26,200	24,500*	18,700*	65.0	66.2	24,800	23,300	21,600*	16,500*	
65.0	62.2	25,200	24,100	23,100	20,700*	65.0	64.3	25,000	23,500	22,400*	18,300*	70.0	64.0	22,400	21,100	20,100*	16,100*	
70.0	59.6	22,900	21,900	21,100	20,000*	70.0	62.0	22,600	21,300	20,500	17,900*	75.0	61.9	20,300	19,200	18,300	15,700*	
75.0	57.0	20,900	20,000	19,300	18,700	75.0	59.7	20,500	19,500	18,700	17,400*	80.0	59.6	18,500	17,600	17,000	15,400*	
80.0	54.3	19,000	18,300	17,700	17,200	80.0	57.3	18,700	17,800	17,200	16,600	85.0	57.4	17,000	16,200	15,500	14,900*	
85.0	51.6	17,500	16,900	16,400	16,000	85.0	54.8	17,200	16,400	15,800	15,400	90.0	55.2	15,700	14,900	14,400	14,000	
90.0	48.7	16,100	15,700	15,300	14,900	90.0	52.2	15,900	15,200	14,700	14,300	95.0	52.8	14,400	13,800	13,300	13,000	
95.0	45.6	15,000	14,600	14,200	13,900	95.0	49.5	14,600	14,100	13,700	13,300	100.0	50.3	13,400	12,800	12,500	12,100	
100.0	42.4	14,000	13,600	13,300	13,000	100.0	46.8	13,600	13,100	12,800	12,500	110.0	45.1	11,700	11,200	10,900	10,700	
110.0	35.4	12,100	11,900	11,700	11,600	110.0	40.8	11,900	11,400	11,200	11,000	120.0	39.3	10,300	9,900	9,600	9,400	
120.0	26.6	10,800	10,600	10,500	10,400	120.0	34.0	10,300	10,100	9,900	9,800	130.0	32.8	8,900	8,800	8,600	8,400	
125.0	21.3	10,230	9,900			130.0	25.7	9,200	9,100	8,900	8,800	140.0	24.3	8,000	7,800	7,700	7,600	
						135.0	20.5	8,830										
Reeves		4	2	2	2	Reeves		4	2	2	2	Reeves		4	2	2	2	

Refer to notes on page 32.



CK1100G SPECIFICATIONS

Barge

5 Counterweights (69,000 lbs) - 2 Carbody weights (31,800 lbs) - Crawlers in extended position.

160' Boom						170' Boom						180' Boom					
360° Rated Load (lbs)						360° Rated Load (lbs)						360° Rated Load (lbs)					
Load Radius (ft)	Boom Angle (deg.)	0 Degree Machine List	1 Degree Machine List	2 Degree Machine List	2 Degree Machine List	Load Radius (ft)	Boom Angle (deg.)	0 Degree Machine List	1 Degree Machine List	2 Degree Machine List	2 Degree Machine List	Load Radius (ft)	Boom Angle (deg.)	0 Degree Machine List	1 Degree Machine List	2 Degree Machine List	2 Degree Machine List
28.0	81.5	50,200*				30.0	81.3	44,500*				30.0	81.8	39,300*			
30.0	80.8	50,100*				32.0	80.7	43,900*				32.0	81.2	38,800*			
32.0	80.1	49,700*				34.0	80.0	43,200*				34.0	80.5	38,200*			
34.0	79.4	49,200*				36.0	79.3	42,500*				36.0	79.9	37,600*			
36.0	78.6	48,500*				38.0	78.6	41,900*				38.0	79.2	37,000*			
38.0	77.9	47,800*				40.0	77.9	41,200*				40.0	78.6	36,400*			
40.0	77.2	46,600*				42.0	77.2	40,600*				42.0	77.9	35,800*			
42.0	76.4	44,300*				44.0	76.5	40,000*				44.0	77.2	35,100*			
44.0	75.6	42,100*	32,200*			46.0	75.8	39,300*				46.0	76.6	34,500*			
46.0	74.9	39,800	31,700*			48.0	75.1	37,400*	28,400*			48.0	75.9	33,900*			
48.0	74.1	37,800	31,300*			50.0	74.4	35,400*	28,100*			50.0	75.3	33,300*			
50.0	73.4	35,800	31,000*			55.0	72.6	31,200	27,100*	17,700*		55.0	73.7	30,800*	24,200*		
55.0	71.5	31,400	28,900*	20,000*		60.0	70.9	27,600	25,400*	17,300*		60.0	72.0	27,400	22,900*	15,300*	
60.0	69.6	27,800	26,000	19,300*		65.0	69.1	24,600	23,000	16,900*		65.0	70.3	24,400	21,800*	15,100*	
65.0	67.7	25,000	23,400	18,900*	14,400*	70.0	67.3	22,300	20,900	16,400*	12,400*	70.0	68.6	21,900	20,400*	14,600*	10,800*
70.0	65.8	22,600	21,200	18,500*	14,000*	75.0	65.4	20,300	19,000	16,000*	12,200*	75.0	66.9	19,900	18,700	14,200*	10,600*
75.0	63.8	20,500	19,300	18,000*	13,700*	80.0	63.5	18,500	17,400	15,600*	11,800*	80.0	65.2	18,100	17,100	13,800*	10,400*
80.0	61.8	18,700	17,700	16,900	13,400*	85.0	61.6	16,800	16,000	15,300*	11,500*	85.0	63.4	16,600	15,700	13,500*	10,000*
85.0	59.7	17,000	16,300	15,600	13,100*	90.0	59.7	15,400	14,700	14,000	11,300*	90.0	61.6	15,200	14,400	12,900*	9,700*
90.0	57.6	15,700	15,000	14,300	12,800*	95.0	57.8	14,300	13,600	13,200	11,100*	95.0	59.8	14,000	13,200	12,200*	9,500*
95.0	55.4	14,500	13,900	13,500	12,400*	100.0	55.8	13,300	12,600	12,100	10,800*	100.0	57.9	12,900	12,300	11,600*	9,300*
100.0	53.2	13,500	12,900	12,400	12,000	110.0	51.5	11,500	10,900	10,600	10,100*	110.0	54.0	11,100	10,600	10,300	8,500*
110.0	48.6	11,700	11,100	10,900	10,600	120.0	47.0	9,800	9,600	9,300	9,000	120.0	49.9	9,600	9,100	8,800	7,700*
120.0	43.6	10,100	9,800	9,600	9,300	130.0	42.2	8,700	8,400	8,200	8,000	130.0	45.6	8,500	8,000	7,700	6,900*
130.0	38.1	8,900	8,600	8,500	8,300	140.0	36.8	7,700	7,300	7,100	7,000	140.0	40.9	7,400	7,000	6,900	6,000*
140.0	31.6	7,900	7,800	7,600	7,500	150.0	30.5	6,800	6,500	6,400	6,200*	150.0	35.7	6,500	6,200	6,000	5,000*
150.0	23.7	7,100	6,900	6,800	6,700	160.0	23.2	5,900	5,800*	5,800*	5,100*	160.0	29.7	5,600	5,400	5,000*	4,200*
												165.0	26.5	5,100	5,100	4,400*	3,600*
Reeves	2	2	2	2		Reeves	2	2	2	2		Reeves	2	2	2	2	2
190' Boom						200' Boom											
360° Rated Load (lbs)						360° Rated Load (lbs)											
Load Radius (ft)	Boom Angle (deg.)	0 Degree Machine List	1 Degree Machine List	2 Degree Machine List	2 Degree Machine List	Load Radius (ft)	Boom Angle (deg.)	0 Degree Machine List	1 Degree Machine List	2 Degree Machine List	2 Degree Machine List						
32.0	81.6	34,400*				34.0	81.5	30,300*									
34.0	81.0	33,800*				36.0	80.9	29,700*									
36.0	80.4	33,300*				38.0	80.3	29,200*									
38.0	79.8	32,700*				40.0	79.7	28,700*									
40.0	79.2	32,200*				42.0	79.1	28,200*									
42.0	78.6	31,700*				44.0	78.6	27,700*									
44.0	78.0	31,100*				46.0	78.0	27,300*									
46.0	77.4	30,600*				48.0	77.4	26,800*									
48.0	76.7	30,100*				50.0	76.8	26,300*									
50.0	76.1	29,600*				55.0	75.3	24,900*									
55.0	74.5	28,100*	21,700*			60.0	73.8	23,200*	18,200*								
60.0	73.0	26,200*	20,600*			65.0	72.4	21,500*	17,100*	11,700*							
65.0	71.4	24,000*	19,500*	13,300*		70.0	70.9	20,000*	16,100*	11,300*							
70.0	69.8	21,800	18,400*	13,100*		75.0	69.3	18,500*	15,100*	11,000*							
75.0	68.2	19,900	17,300*	12,700*	9,200*	80.0	67.8	17,100*	14,100*	10,600*	7,700*						
80.0	66.5	18,000	16,200*	12,400*	9,000*	85.0	66.2	15,900*	13,300*	10,100*	7,500*						
85.0	64.9	16,400	15,300*	11,900*	8,800*	90.0	64.6	14,700	12,400*	9,500*	7,200*						
90.0	63.2	15,000	14,100	11,300*	8,600*	95.0	63.0	13,500	11,700*	9,000*	7,000*						
95.0	61.5	13,900	13,000	10,600*	8,400*	100.0	61.4	12,400	11,000*	8,400*	6,800*						
100.0	59.7	12,900	12,000	10,000*	8,200*	110.0	58.1	10,600	9,500*	7,400*	6,000*						
110.0	56.2	11,000	10,400	8,900*	7,400*	120.0	54.6	9,200	8,200*	6,500*	5,200*						
120.0	52.5	9,400	9,100	7,900*	6,500*	130.0	51.1	7,800	7,100*	5,600*	4,500*						
130.0	48.5	8,200	7,800	6,800*	5,700*	140.0	47.2	6,500	5,900*	4,600*	3,700*						
140.0	44.3	7,200	6,800	5,900*	4,900*	150.0	43.1	5,200*	4,900*	3,700*	3,100*						
150.0	39.7	6,300	5,900	5,100*	4,100*	155.0	41.0	4,650*	4,400*	3,500*							
160.0	34.8	5,300	5,100*	4,000*	3,400*												
165.0	32.1	4,650	4,600*	3,600*													
Reeves	2	2	2	2		Reeves	2	2	2	2							

Refer to notes on page 32.



Note: This catalog may contain photographs of machines with specifications, attachments and optional equipment not certified for operation in your country. Please consult KOBELCO for those items you may require. Due to our policy of continual product improvements all designs and specifications are subject to change without advance notice.

Copyright by KOBELCO CRANES CO., LTD. No part of this catalog may be reproduced in any manner without notice.

KOBELCO CRANES CO., LTD.

17-1, Higashigotanda 2-chome, Shinagawa-ku, Tokyo 141-8626 JAPAN

Tel: +81-3-5789-2130 Fax: +81-3-5789-3372

URL: <http://www.kobelco-cranes.com/>

Inquiries To:

KOBELCO CRANES NORTH AMERICA, INC.

10845 Train Court, Houston, Texas 77041, USA

Tel: +1-713-856-5755 Fax: +1-713-856-9072

URL: <http://www.kobelcocranesnorthamerica.com/>

Bulletin No. CK1100G_SPEC_US3

3142013 Printed in USA

